



US007218294B2

(12) **United States Patent**
Koyama et al.

(10) **Patent No.:** **US 7,218,294 B2**
(45) **Date of Patent:** **May 15, 2007**

(54) **ELECTROLUMINESCENT DISPLAY HAVING
4 TFTS FOR ROTATION BETWEEN
VERTICAL AND HORIZONTAL IMAGE
STATES.**

(75) Inventors: **Jun Koyama**, Sagamihara (JP);
Mitsuaki Osame, Atsugi (JP); **Yu
Yamazaki**, Setagaya (JP); **Aya Anzai**,
Tsukui (JP)

(73) Assignee: **Semiconductor Energy Laboratory
Co., Ltd.**, Kanagawa-ken (JP)

(*) Notice: Subject to any disclaimer, the term of this
patent is extended or adjusted under 35
U.S.C. 154(b) by 0 days.

(21) Appl. No.: **10/844,401**

(22) Filed: **May 13, 2004**

(65) **Prior Publication Data**

US 2004/0263741 A1 Dec. 30, 2004

(30) **Foreign Application Priority Data**

May 16, 2003 (JP) 2003-139457
Jun. 3, 2003 (JP) 2003-157599

(51) **Int. Cl.**
G09G 3/30 (2006.01)

(52) **U.S. Cl.** **345/76**; 313/504; 315/169.3

(58) **Field of Classification Search** 349/48,
349/206; 345/93, 98, 76; 257/206; 315/169.3;
313/500-504

See application file for complete search history.

(56) **References Cited**

U.S. PATENT DOCUMENTS

6,753,654 B2 6/2004 Koyama

6,809,482 B2 *	10/2004	Koyama	315/169.3
6,864,628 B2 *	3/2005	Yamazaki et al.	313/504
6,909,240 B2	6/2005	Osame et al.		
7,042,162 B2 *	5/2006	Yamazaki et al.	315/169.1
2002/0101394 A1	8/2002	Anzai		
2002/0196212 A1	12/2002	Nishitoba et al.		
2003/0045043 A1	3/2003	Koyama		
2003/0058687 A1	3/2003	Kimura		
2003/0117352 A1 *	6/2003	Kimura	345/87
2004/0189214 A1	9/2004	Osame et al.		
2004/0189615 A1	9/2004	Osame et al.		
2004/0251953 A1	12/2004	Yamazaki et al.		

FOREIGN PATENT DOCUMENTS

JP 2003-076315 3/2003

* cited by examiner

Primary Examiner—Andrew Schechter

Assistant Examiner—Phu Vu

(74) *Attorney, Agent, or Firm*—Eric J. Robinson; Robinson
Intellectual Property Law Office, P.C.

(57) **ABSTRACT**

A light emitting device capable of suppressing drop in luminance or luminance unevenness of a light emitting element due to deterioration of an electro luminescent material and capable of switching an image direction vertically to horizontally without a frame memory additionally provided. The light emitting device of the invention comprises in each pixel first to fourth transistors, a light emitting element, and a signal line. The first transistor and the second transistor control the connection between the signal line and a gate of the third transistor, the fourth transistor controls a current value supplied to the light emitting element, and the third transistor selects whether the current is supplied to the light emitting element or not. Further, the first transistor and the second transistor are switched separately.

63 Claims, 18 Drawing Sheets

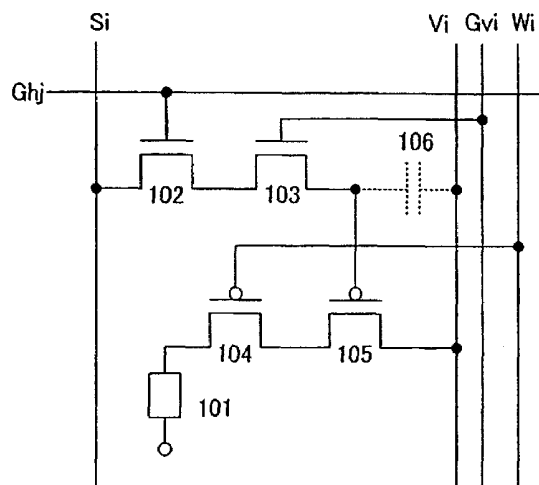
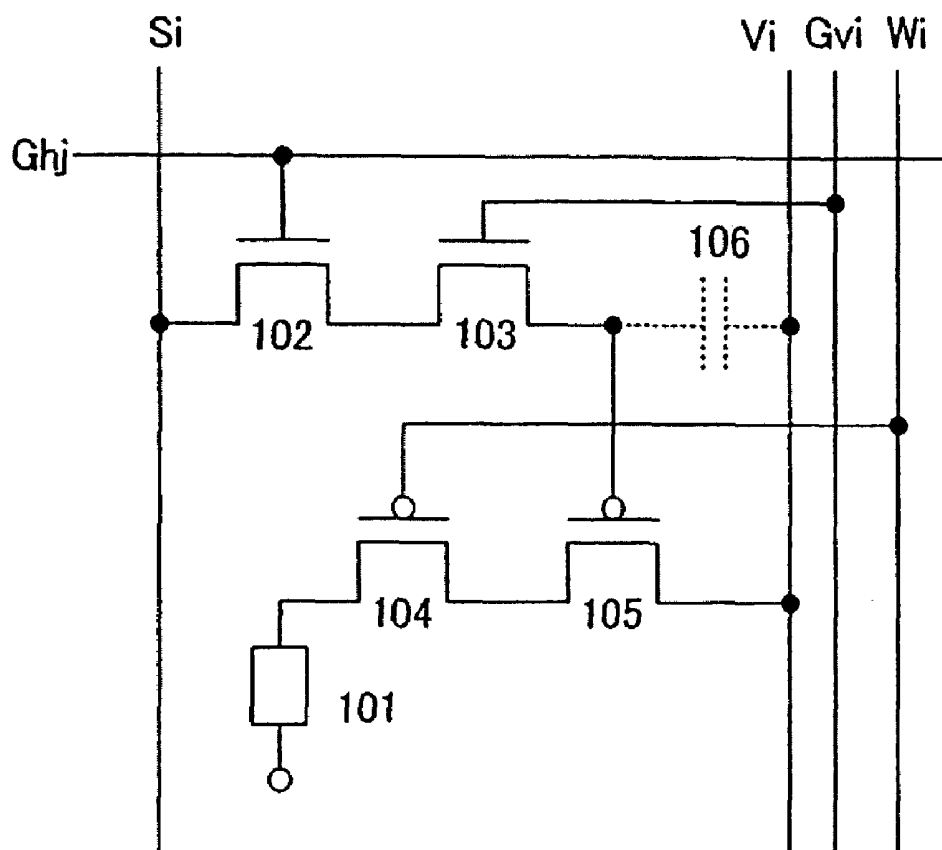
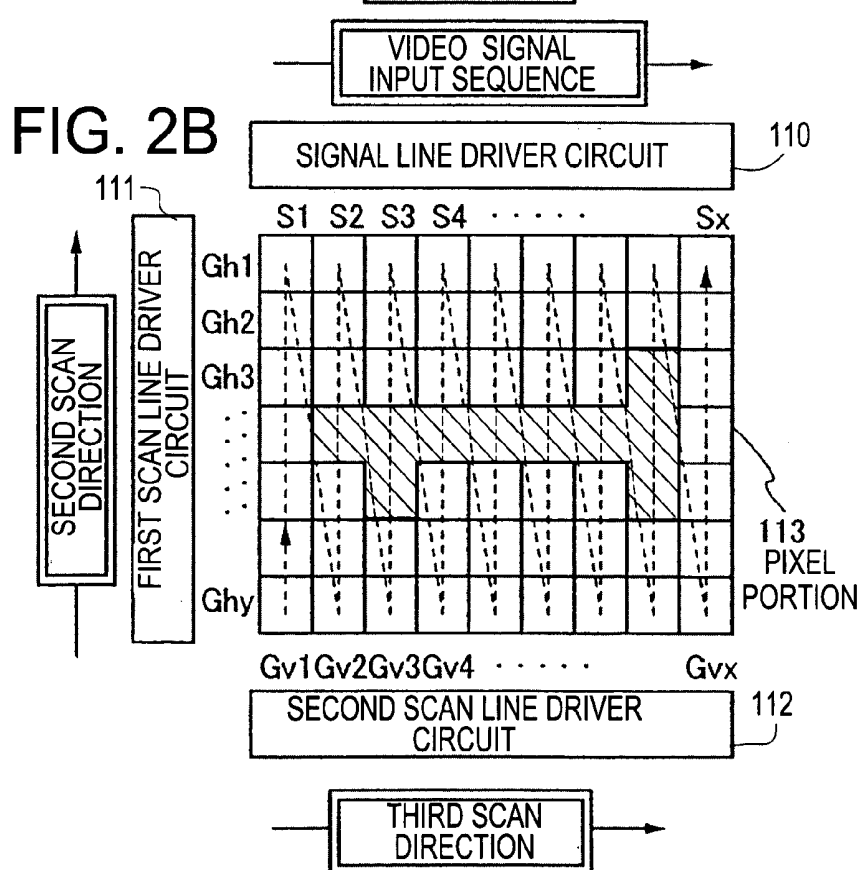
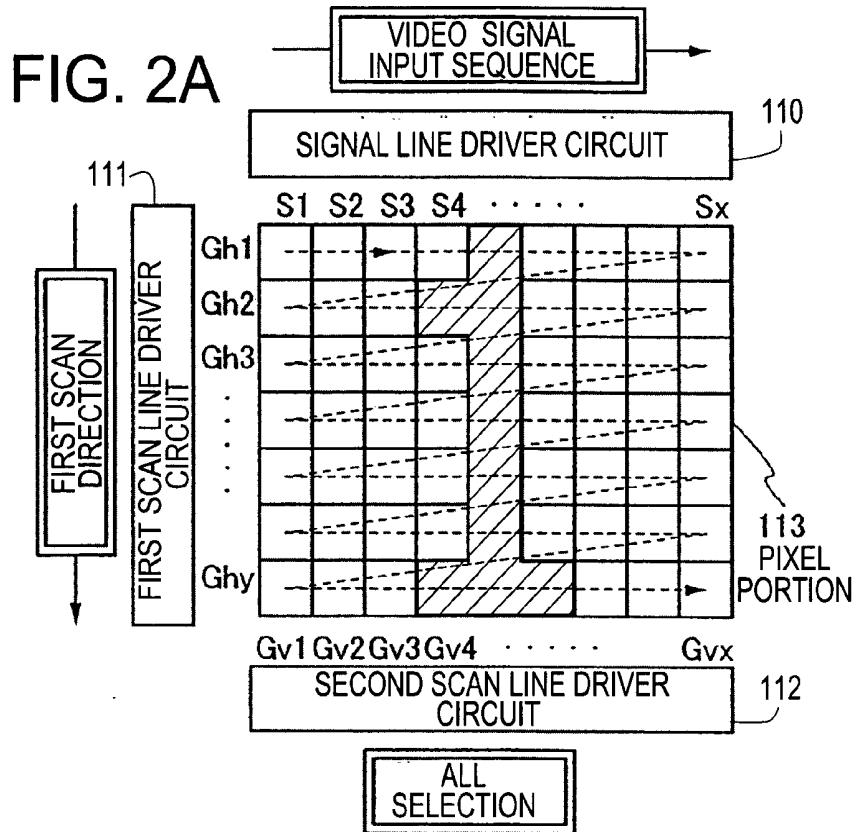


FIG. 1





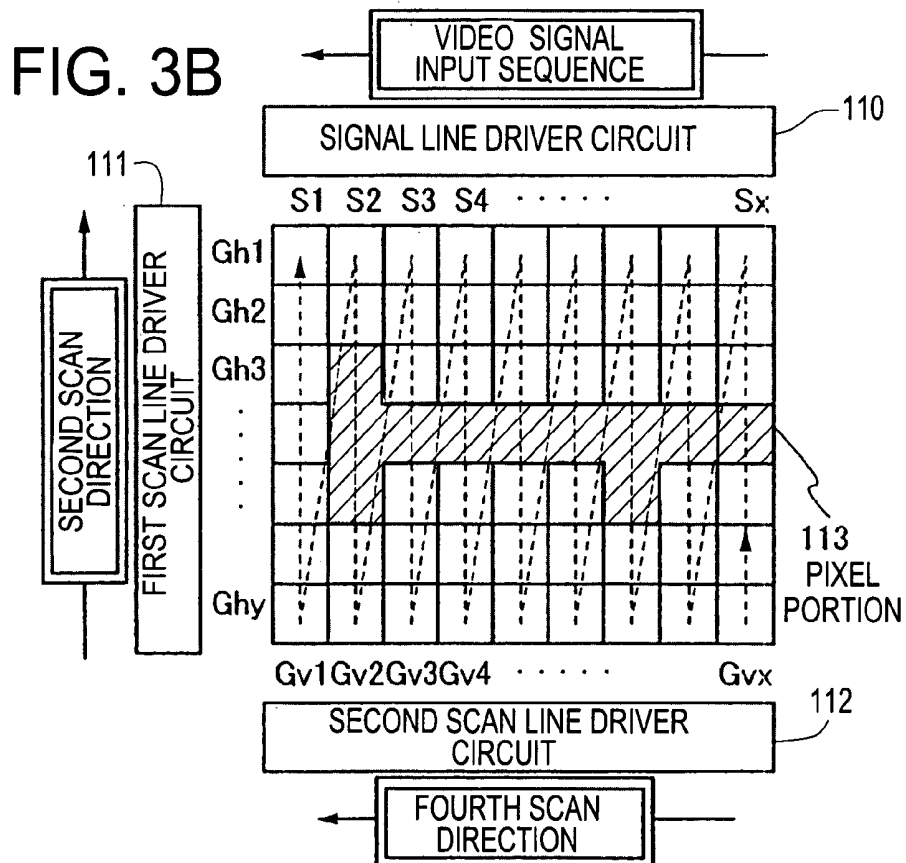
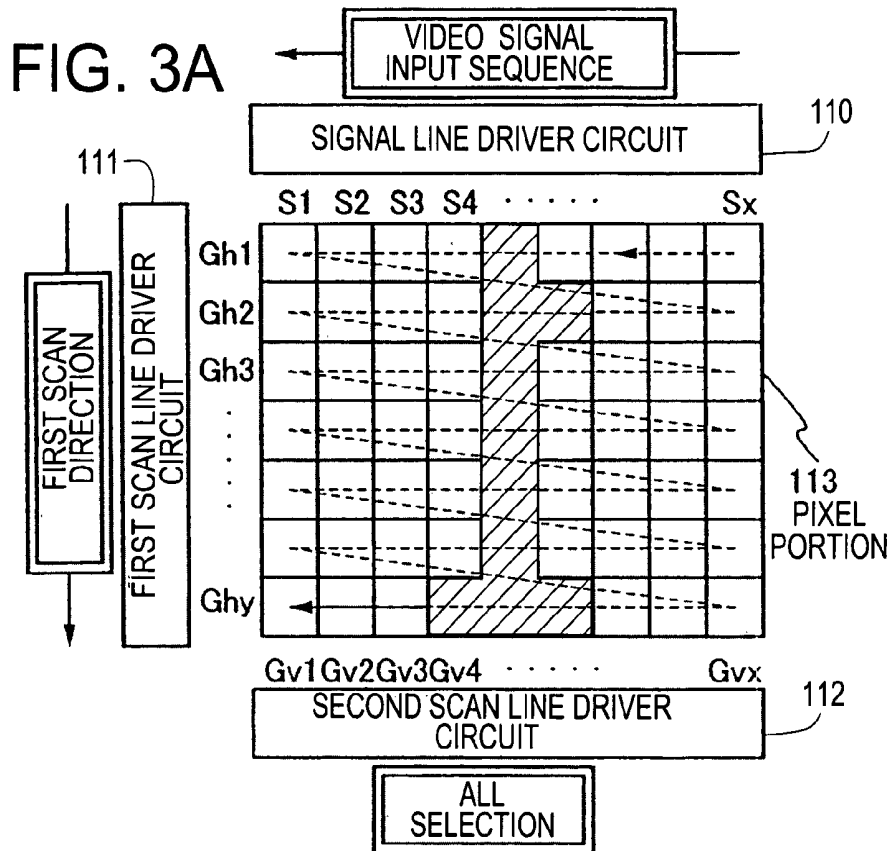


FIG. 4A

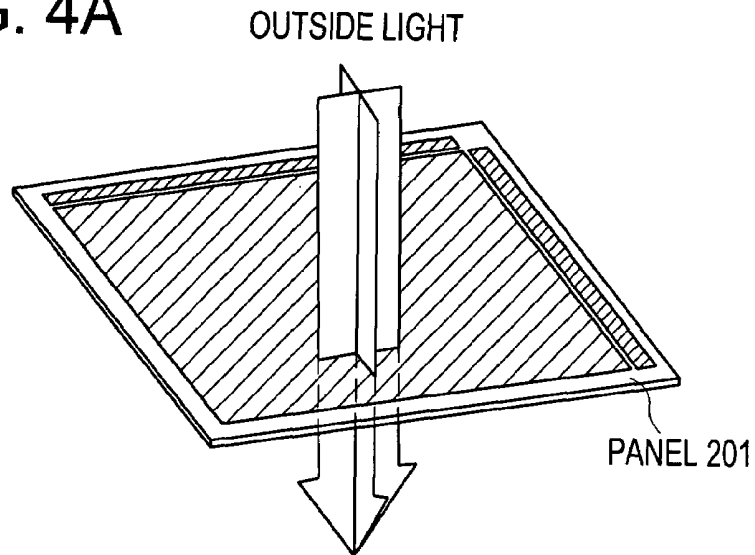


FIG. 4B

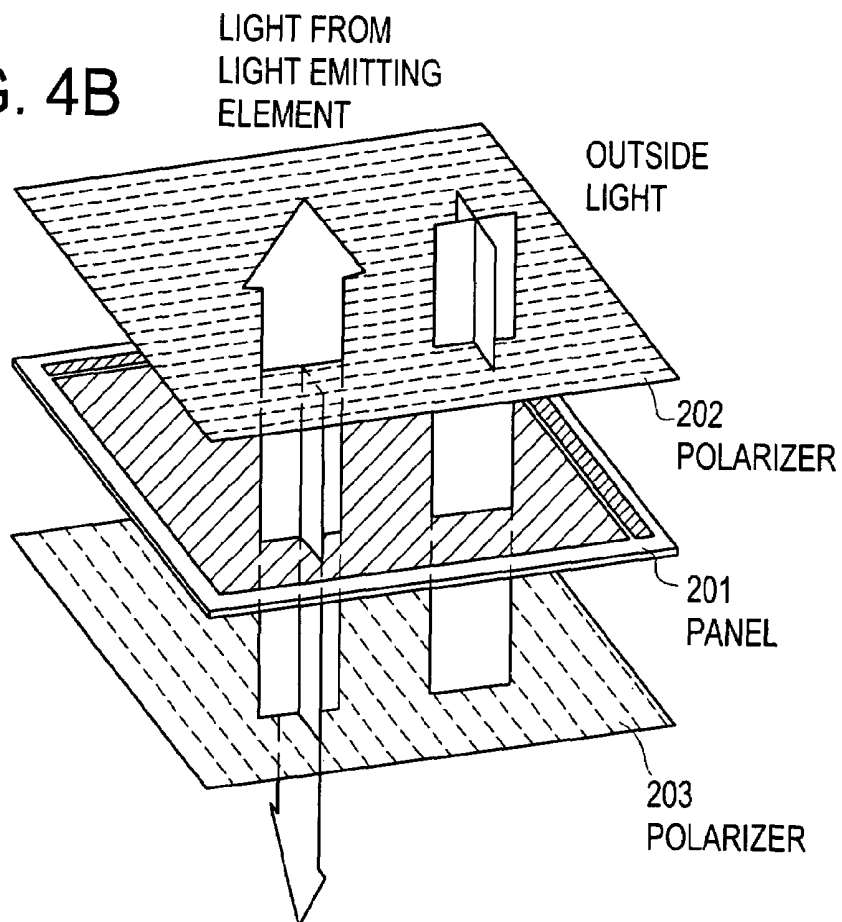


FIG. 5

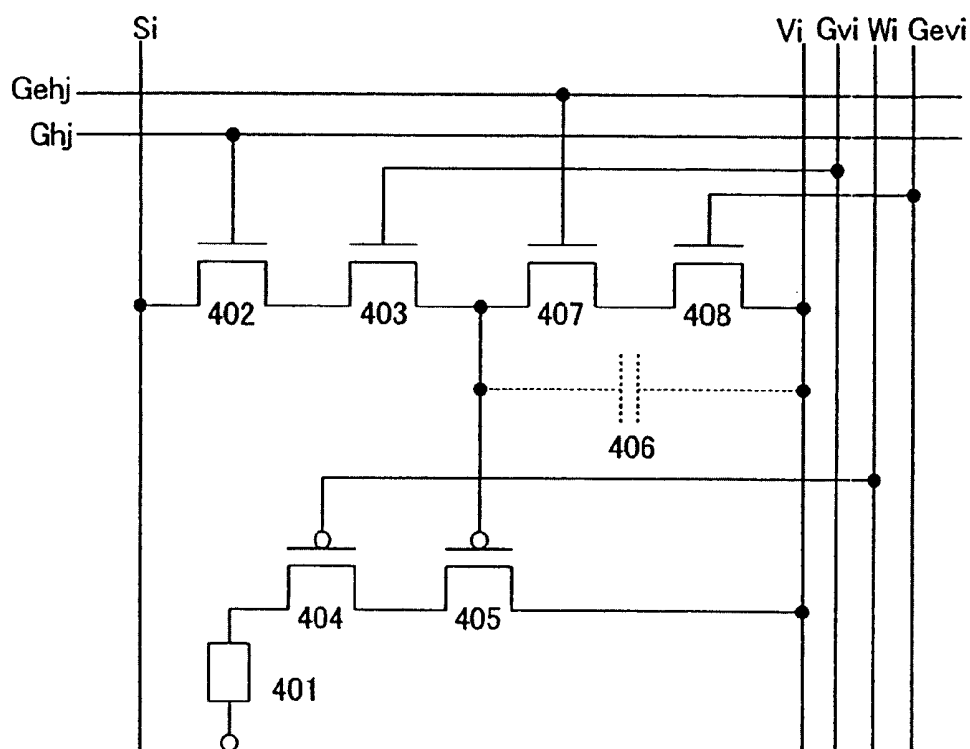


FIG. 6A

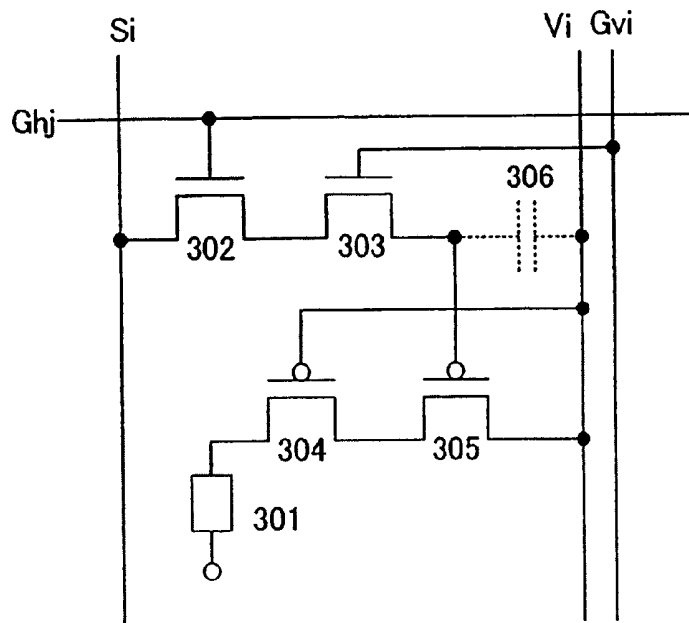


FIG. 6B

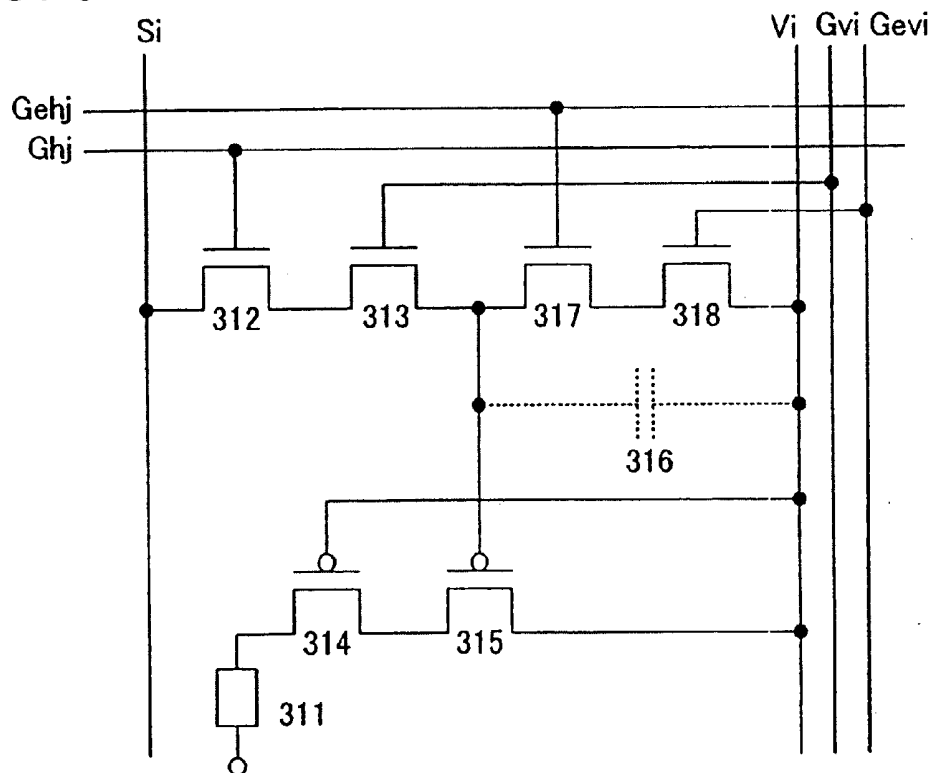


FIG. 7A

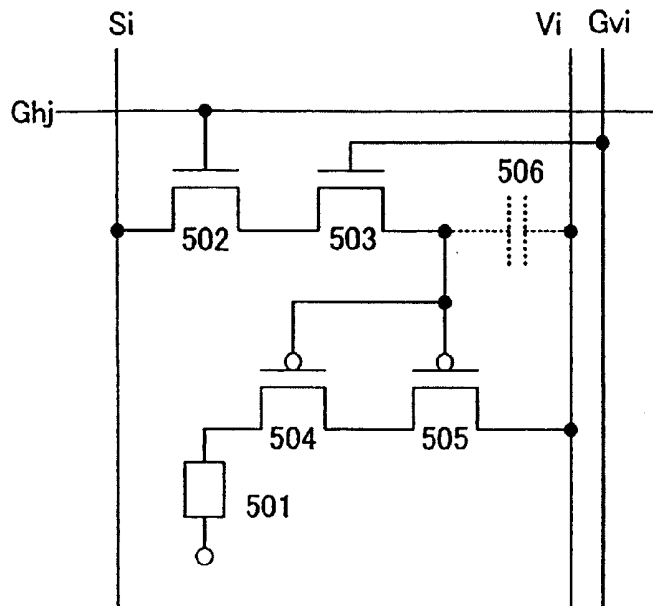


FIG. 7B

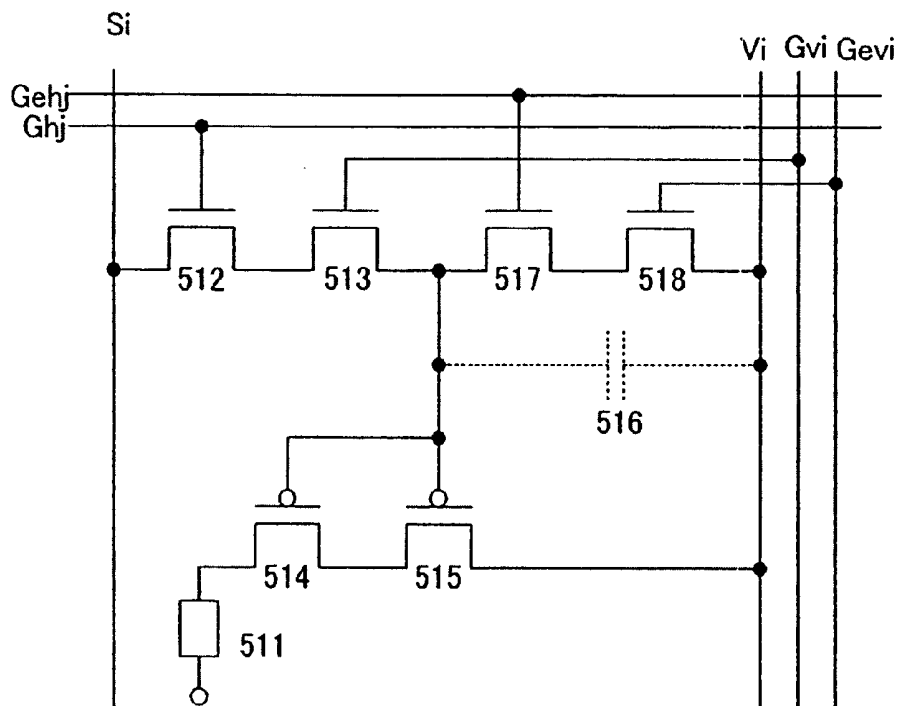


FIG. 8

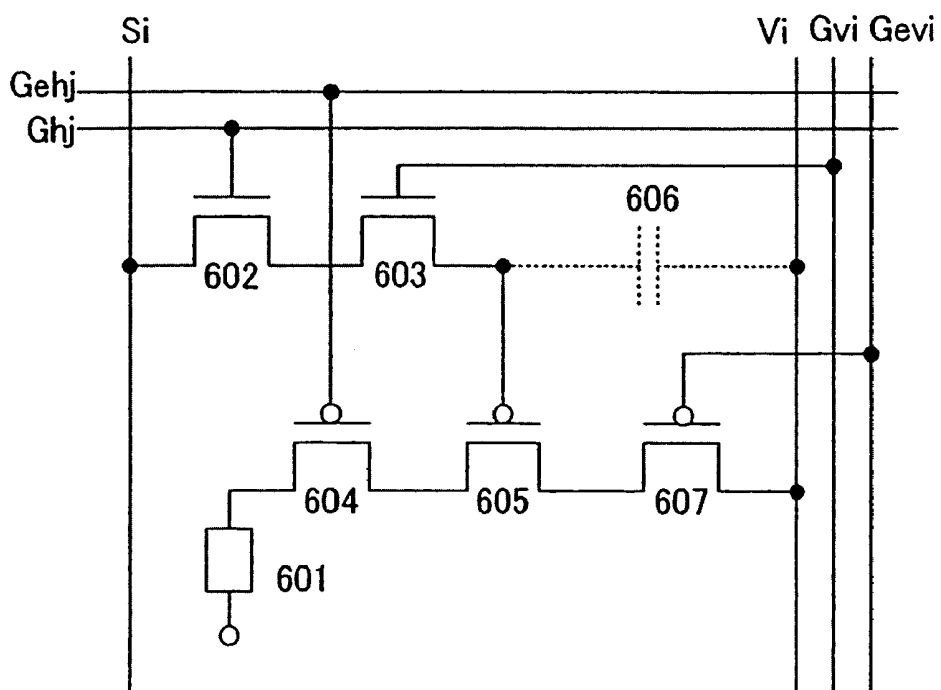


FIG. 10

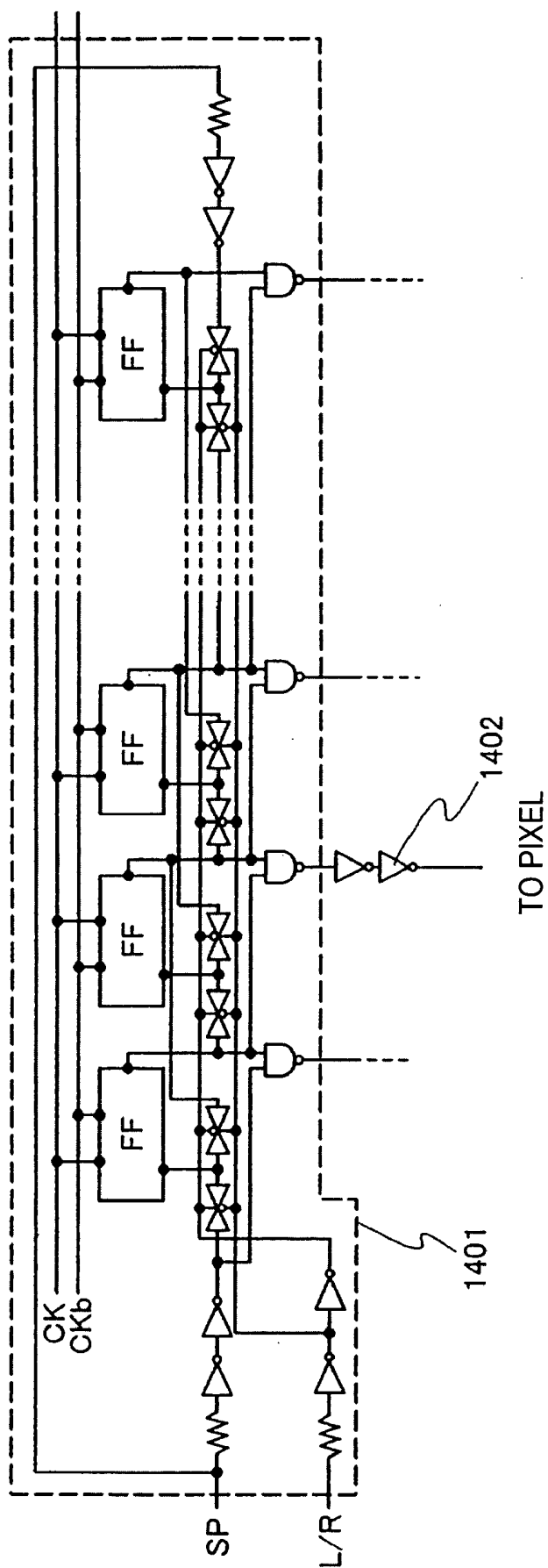


FIG. 11

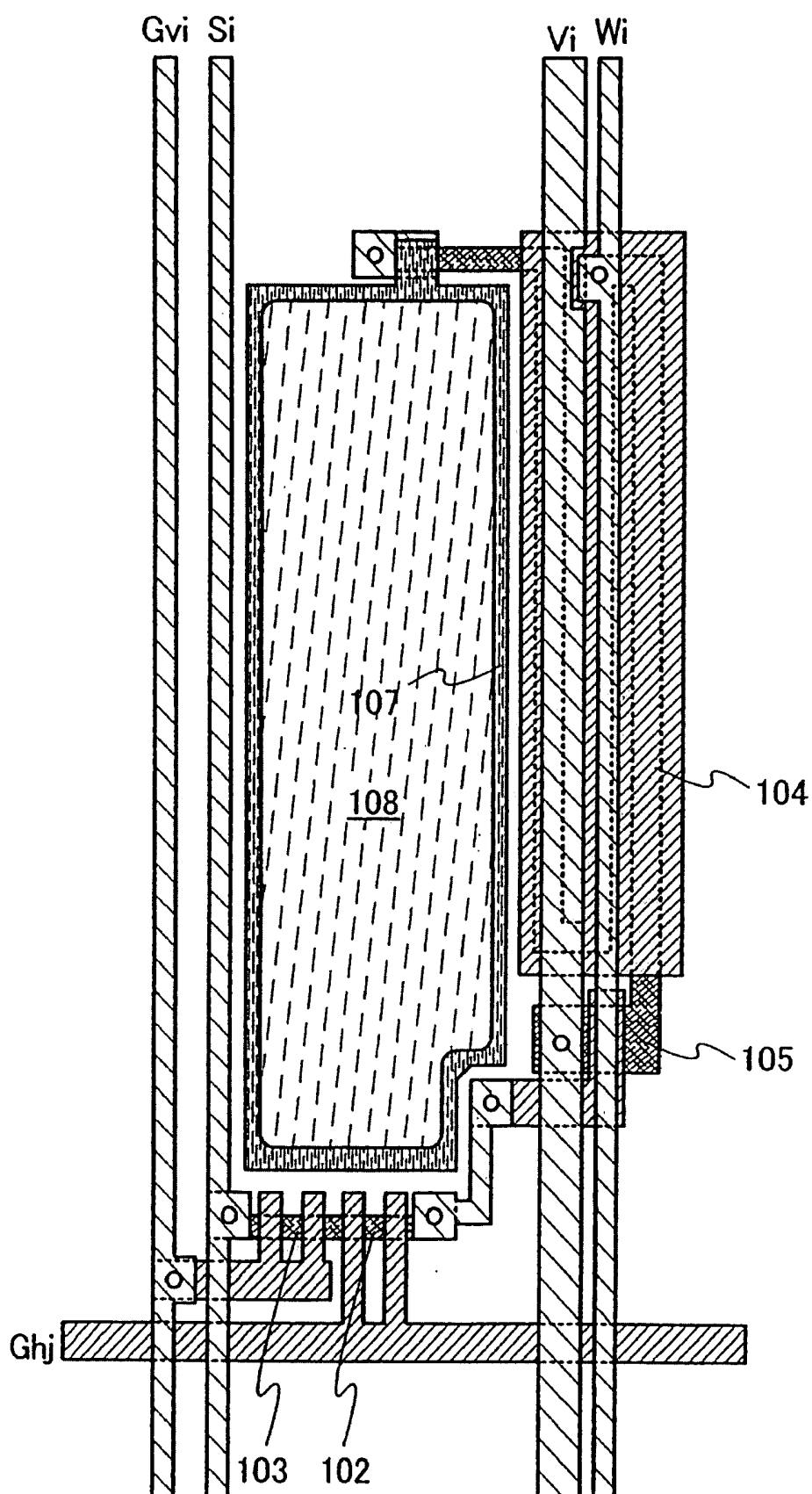


FIG. 12A

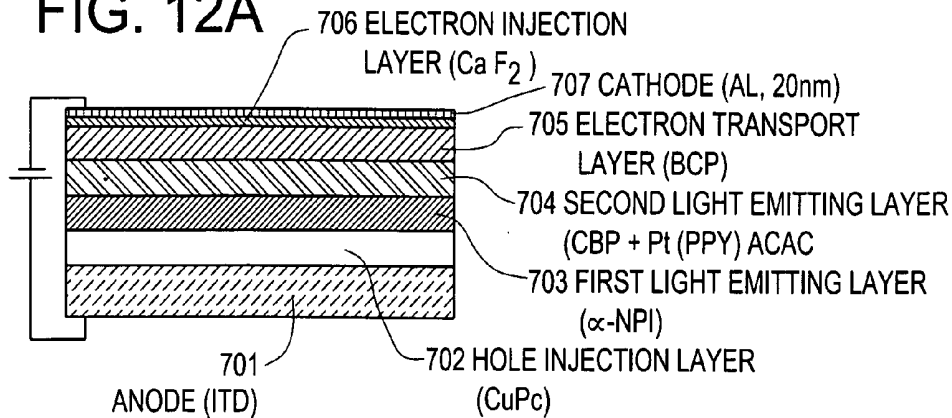


FIG. 12B

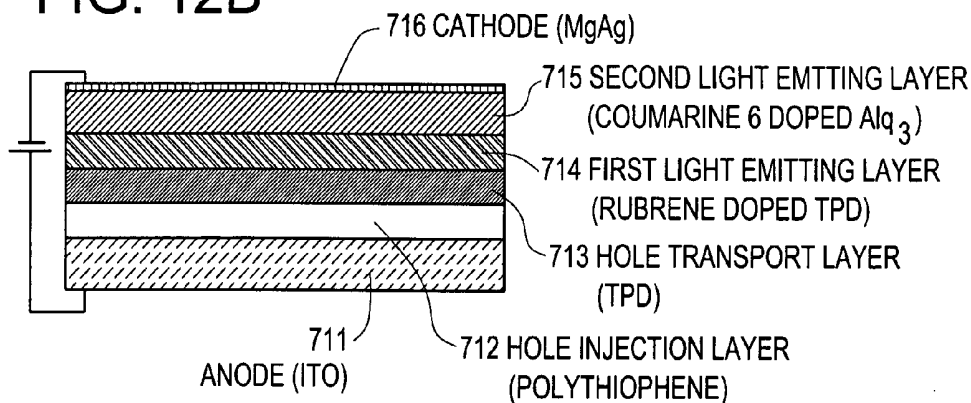


FIG. 12C

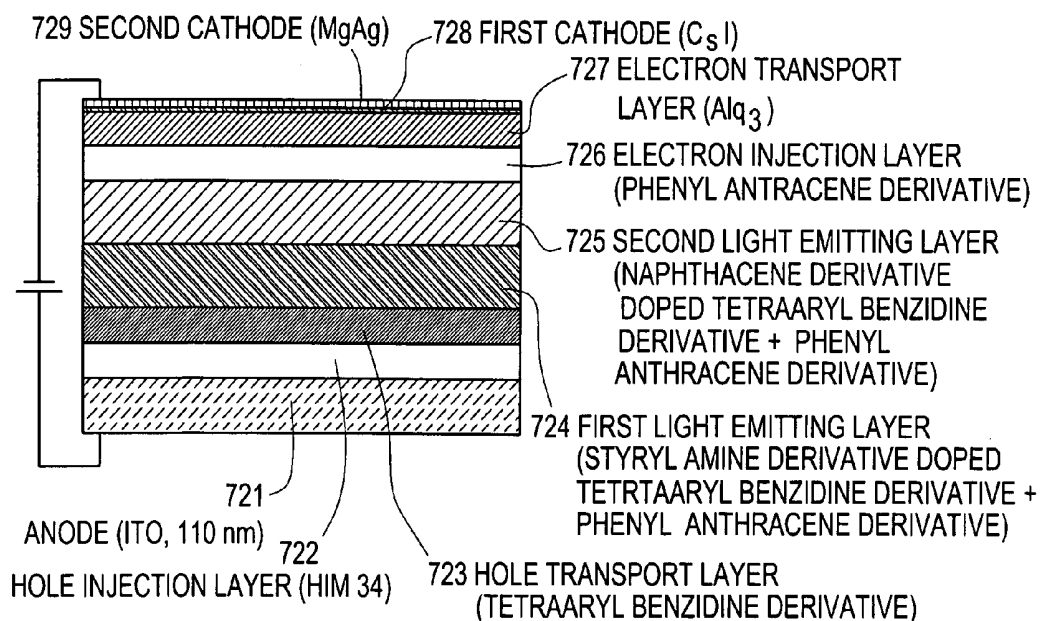


FIG. 13A

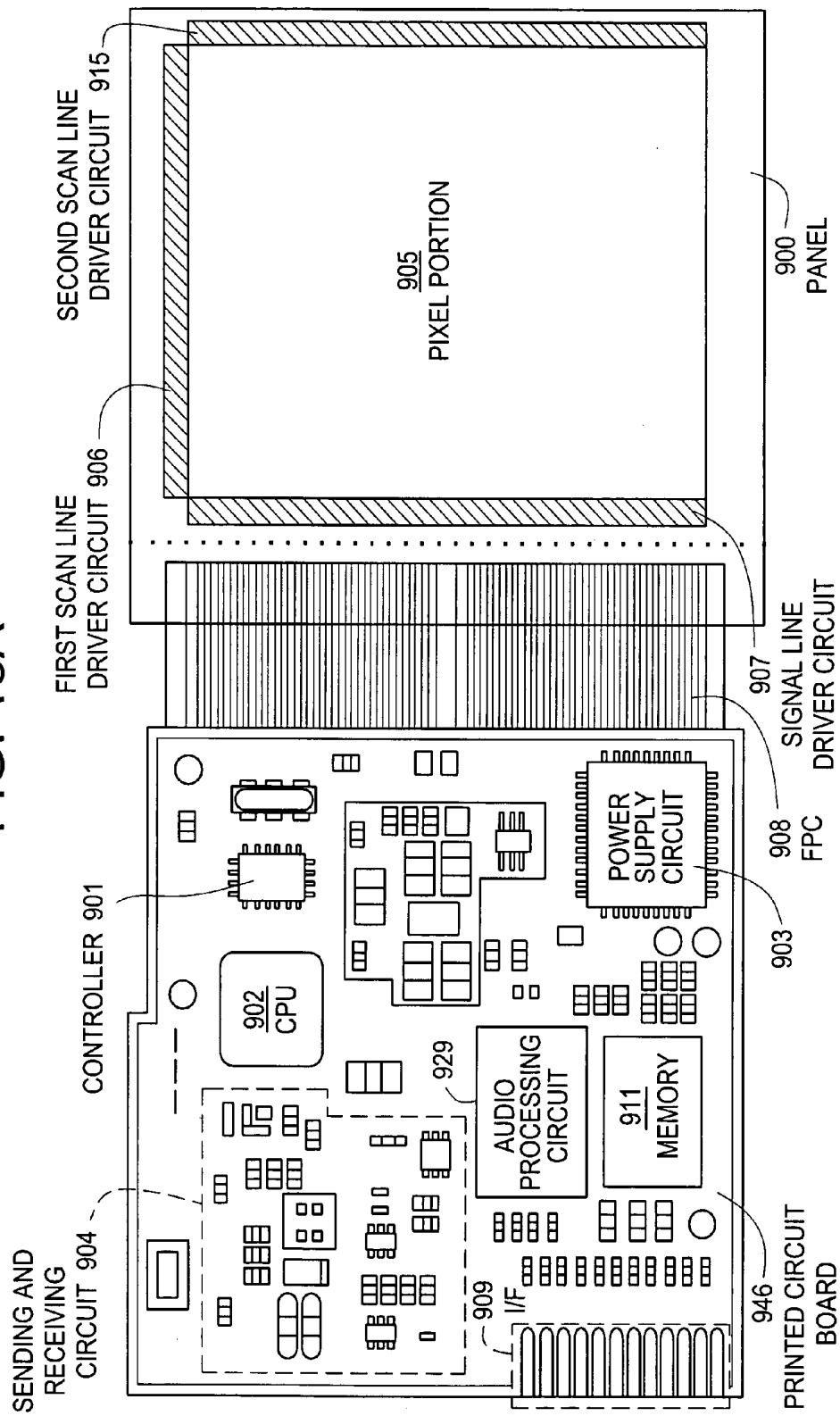


FIG. 13B

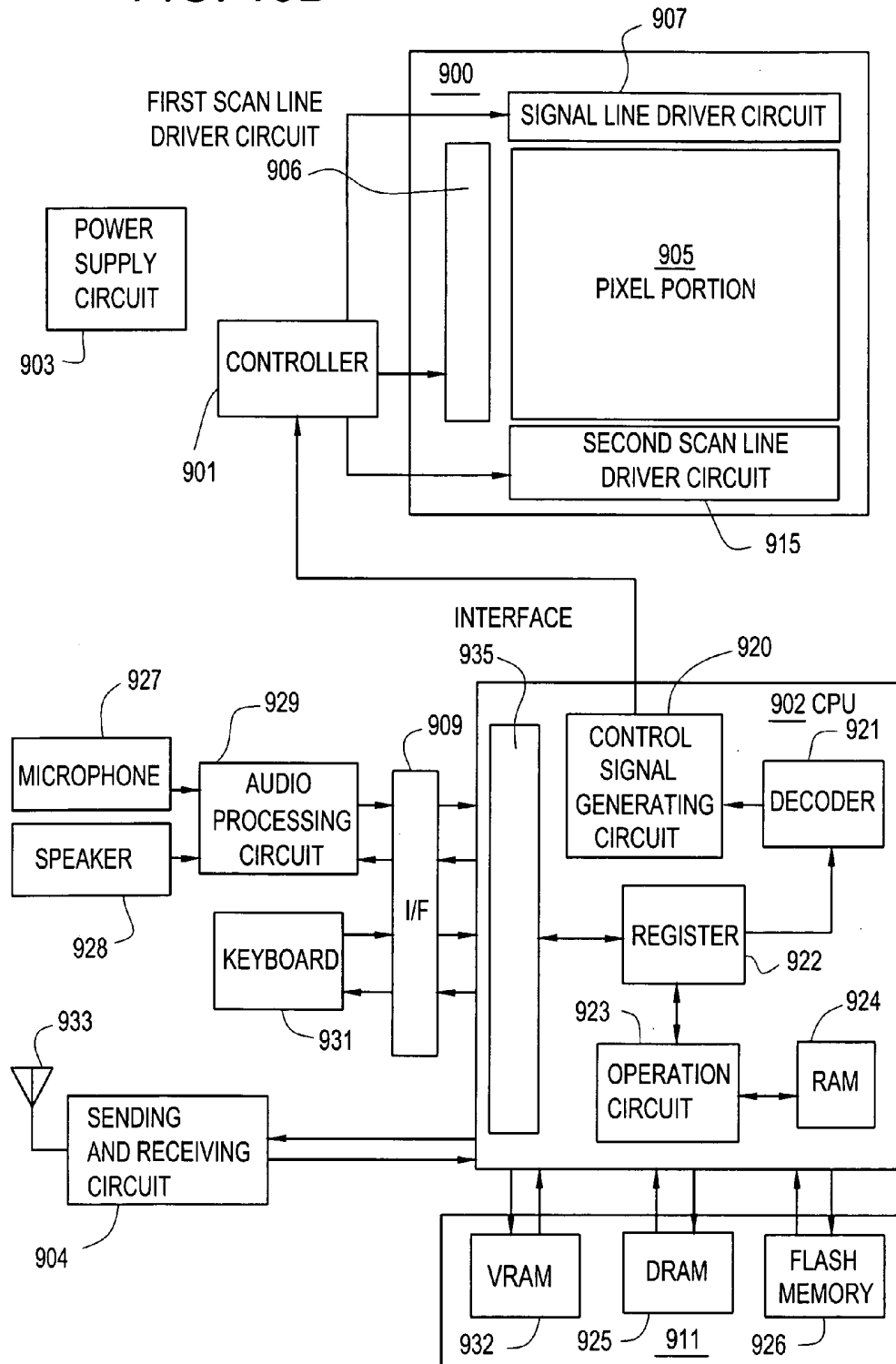


FIG. 14A

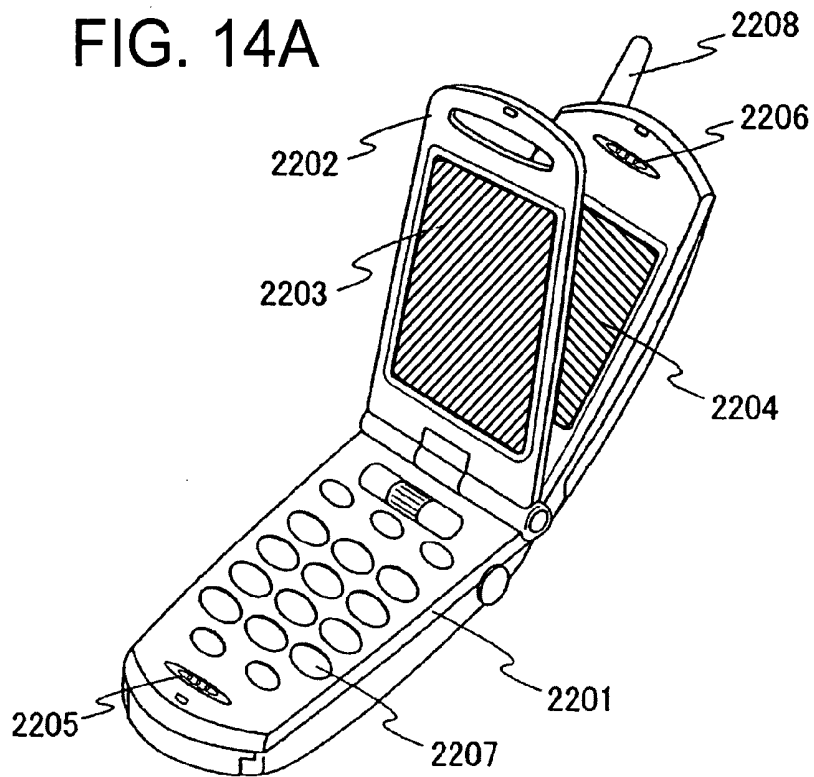


FIG. 14B

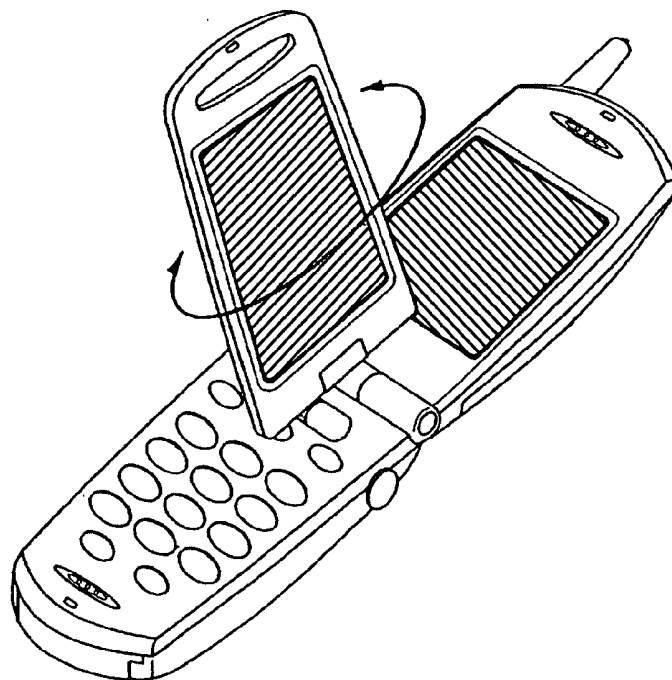


FIG. 15A

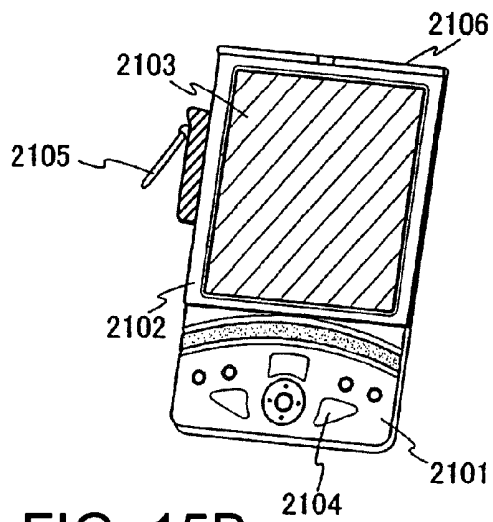


FIG. 15B

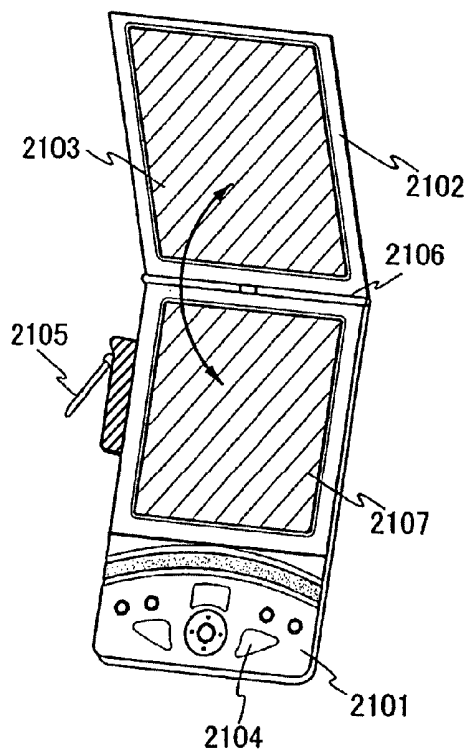


FIG. 15C

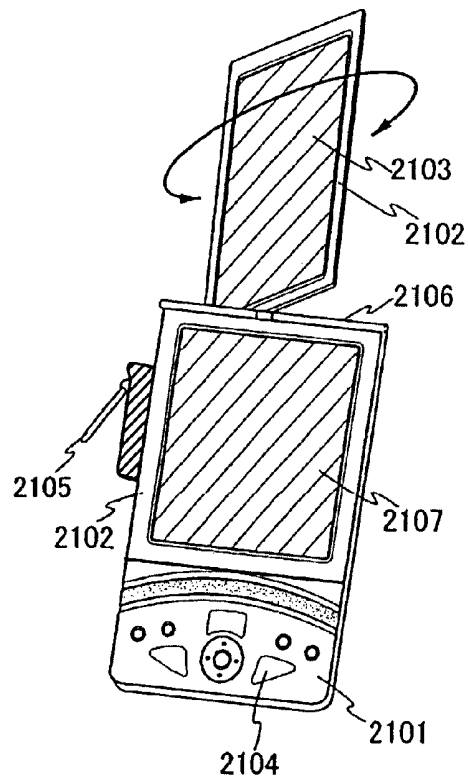


FIG. 16

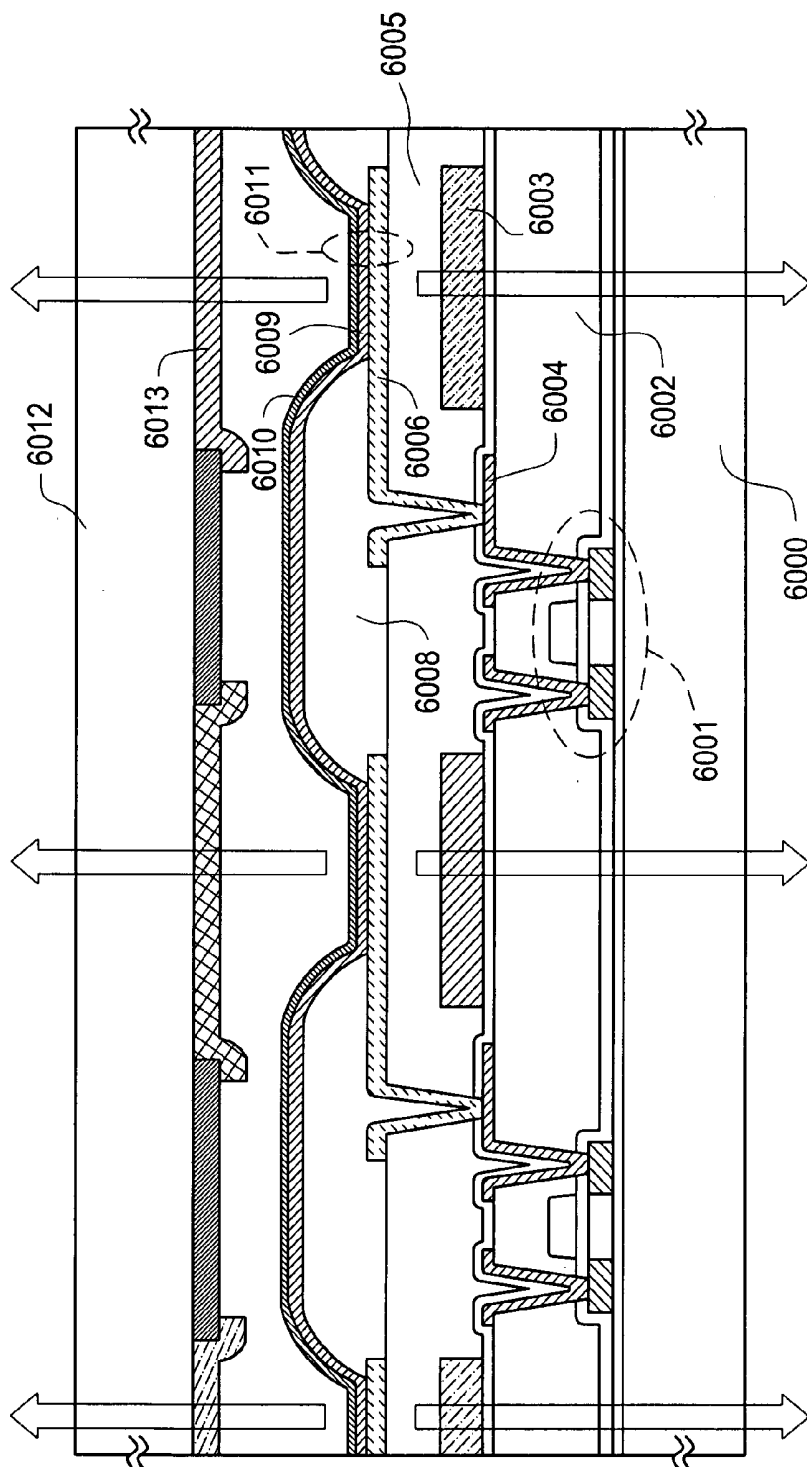
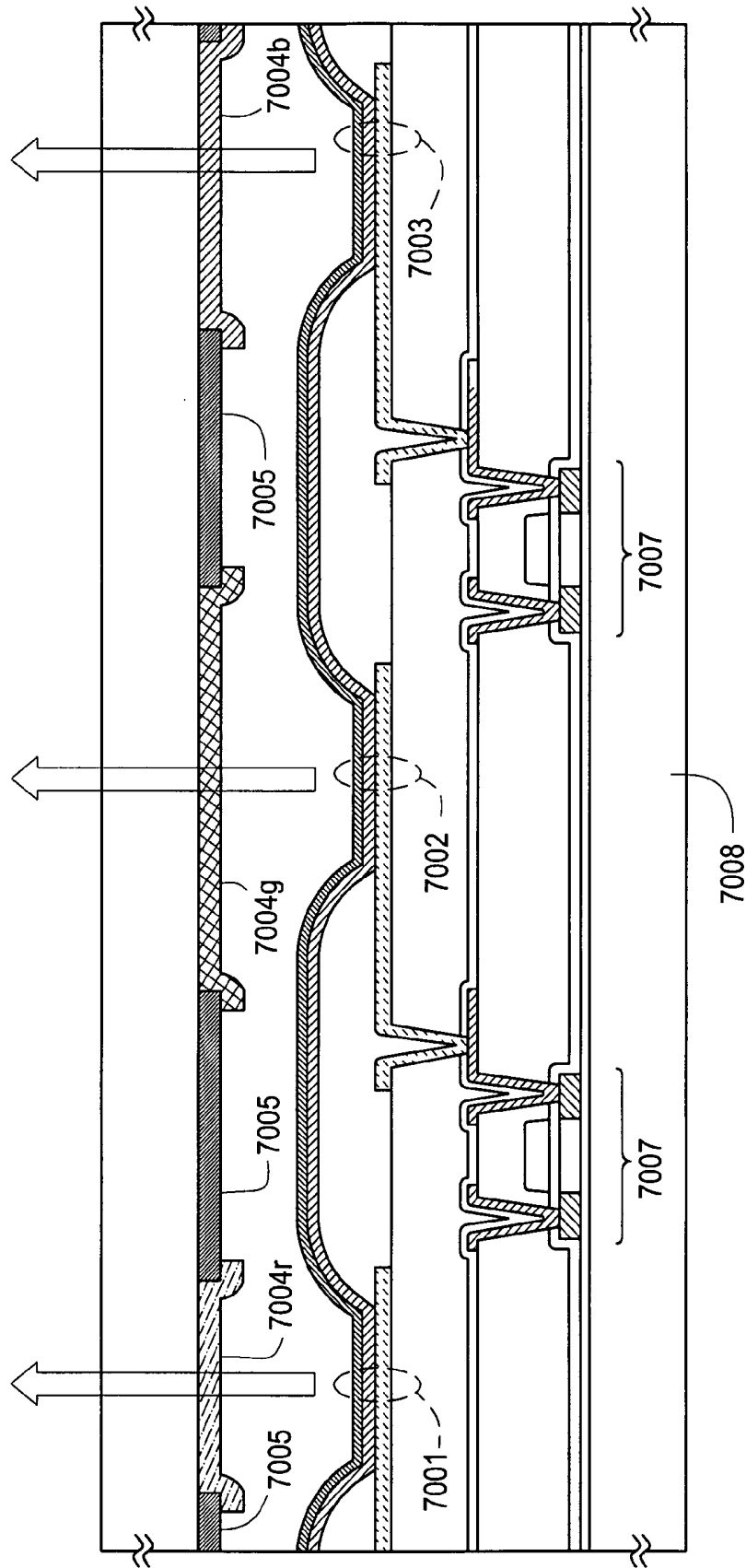


FIG. 17



1

ELECTROLUMINESCENT DISPLAY HAVING 4 TFTS FOR ROTATION BETWEEN VERTICAL AND HORIZONTAL IMAGE STATES.

BACKGROUND OF THE INVENTION

1. Field of the Invention

The present invention relates to a light emitting device capable of switching an image direction vertically to horizontally and also relates to an electronic apparatus using the light emitting device.

2. Description of the Related Art

A portable electronic apparatus typified by a mobile phone, an electronic notebook and the like requires multiple functions such as sending and receiving e-mail, voice recognition, taking-in images by a small camera as well as a display device for displaying images. On the other hand, reduction in the size and weight of the portable electronic apparatus is still sought for satisfying the user needs. Therefore, as many ICs having larger circuit scale and memory capacity as possible are required to be mounted on the narrow space of the portable electronic apparatus. It is an essential part to make a flat panel display to be mounted as thin and light as possible in order to achieve the reduction in the size and weight of the portable electronic apparatus while making space for mounting ICs and realizing multiple functions.

For example, as for a liquid crystal display device which is used for a portable electronic apparatus in relatively many cases, a light source, an optical waveguide and the like are required when it is a transmissive display device, and thus reduction in the weight and thickness of the electronic apparatus is prevented. Meanwhile, in the case of a reflective liquid crystal display device utilizing outside light, an image is recognized with difficulty in the dark, resulting in abandonment of the advantage of a portable electronic apparatus that is capable of being used in all places. In view of the foregoing, a portable electronic apparatus including a light emitting device using a light emitting element as a display element has been recently developed and put into practical use. Since the light emitting element emits light by itself, an image can be clearly displayed even in the dark without a light source which is needed in the liquid crystal display device. Accordingly, the use of a back light typified by a light source and an optical waveguide can be omitted, leading to reduction in the thickness and weight of a display device.

As set forth above, the thicker and lighter a display device is, the easier it is to realize multiple functions of a portable electronic apparatus while reducing the size and weight. For example, disclosed is in Patent Document 1 below a structure of a display device which is capable of switching an image direction vertically to horizontally without a frame memory additionally provided.

Patent Document 1

Japanese Patent Laid-Open No. 2003-076315

SUMMARY OF THE INVENTION

TFTs using polycrystalline silicon have a problem that there are variations in characteristics due to a defect generated in a crystal grain boundary. In particular, when a threshold voltage of TFTs has variations, the luminance of a light emitting element to which a current is supplied in accordance with the TFTs also varies. Further, there is

2

another problem that the luminance of a light emitting element is lowered as an electro luminescent material deteriorates. Deterioration of an electro luminescent material causes drop in luminance, even when a constant current is supplied to a light emitting element. The level of deterioration depends on the light emitting time and the amount of current. Therefore, when the level of gray scale changes per pixel in accordance with an image to be displayed, the level of deterioration of a light emitting element varies in each pixel, leading to variations in luminance.

It is to be noted that drop in luminance due to deterioration of an electro luminescent layer can be suppressed to some extent by operating in a saturation region a transistor for controlling a current value supplied to a light emitting element. In the saturation region, however, a slight variation in voltage between a gate and a source (gate voltage) V_{gs} affects a drain current significantly, and thus the luminance varies. Therefore, in the case of operating a transistor in a saturation region, a gate voltage V_{gs} of the transistor has to be kept at a constant value during a period in which a light emitting element emits light.

The gate voltage V_{gs} is sensitive to off-current of a transistor for controlling a video signal input to a pixel. In order to prevent the gate voltage V_{gs} from being varied due to the off-current, it is necessary to increase the capacitance of a capacitor provided between the gate and the source of the transistor, or to lower the off-current of the transistor for controlling a video signal input to a pixel. However, it takes time and cost to optimize the process of transistor so as to realize both the low off-current of the transistor for controlling a video signal input to a pixel and the high on-current thereof to increase the capacitance. Further, the gate voltage V_{gs} of the transistor for controlling a current supplied to a light emitting element is sensitive to switching of other transistors, variations in potentials of a signal line and a scan line and the like due to parasitic capacitance of the gate.

Although a light emitting device contributes to multiple functions of a portable electronic apparatus and reduction in the size and weight thereof, it has a difficulty in increasing the size of display screen. One of the reasons why the large sized display screen is required is that more information has to be displayed as a portable electronic apparatus has multiple functions. Another reason is that demand for a portable electronic apparatus for the elderly, which can display large letters on a screen, is grown as elderly population increases.

In view of the foregoing, the invention provides a light emitting device in which variations in luminance of the light emitting element due to variations in characteristics of TFTs and due to changes in a gate voltage V_{gs} can be suppressed while not optimizing the process of transistors, and luminance can be prevented from being lowered or varied due to deterioration of an electro luminescent material. The invention provides also a light emitting device which is capable of switching an image direction vertically to horizontally without a frame memory additionally provided. The invention further provides an electronic apparatus using such a light emitting device.

In addition to the aforementioned objects, it is still another object of the invention to provide an electronic apparatus, more specifically a portable electronic apparatus, in which a large sized display screen is achieved while reducing the weight and size of the apparatus.

According to the invention, a transistor (current controlling transistor) serving as a switching element is connected in series with a transistor (driving transistor) for supplying a current to a light emitting element. A gate potential of the

driving transistor is controlled so that the driving transistor is operated in a saturation region, and thereby supplying a current all the time at least during a period for displaying an image. Meanwhile, the current controlling transistor is operated in a linear region, and a gate potential thereof is controlled by a video signal inputted to a pixel.

By operating the current controlling transistor in a linear region, a voltage V_{ds} (drain voltage) between the source and the drain thereof is much smaller as compared with a voltage V_{el} applied to the light emitting element, and a current supplied to the light emitting element is not affected by a slight variation in a voltage V_{gs} (gate voltage) between the gate and the source. Further, by operating the driving transistor in a saturation region, a drain current is determined only by the V_{gs} regardless of the drain voltage V_{ds} . In other words, the current controlling transistor selects only whether a current is supplied to the light emitting element or not, and the current value supplied to the light emitting element is determined by the driving transistor operated in a saturation region. Accordingly, a current supplied to the light emitting element can be kept at a relatively constant value even without increasing the capacitance of a capacitor provided between the gate and the source of the current controlling transistor and lowering off-current of a transistor for controlling a video signal input to a pixel. Moreover, a current supplied to the light emitting element is not affected by parasitic capacitance of the gate of the current controlling transistor. Therefore, factors affecting variations are reduced resulting in improved image quality. Also, by operating the driving transistor in a saturation region, a drain current is kept at a relatively constant value even when the V_{ds} is lowered without increasing V_{el} as the light emitting element deteriorates. Thus, it is possible to suppress the drop in luminance even when the light emitting element deteriorates. Further, it is not necessary to optimize the process in order to lower off-current of a transistor for controlling a video signal input to a pixel, and therefore, the manufacturing process of a transistor can be simplified leading to reduced cost and enhanced yield.

In addition, according to the invention, at least two transistors functioning as switching elements for controlling a video signal input to a pixel are provided in the pixel and connected in series. A gate of one transistor (a first switching transistor) is electrically connected to a first scan line, and a gate of the other transistor (a second switching transistor) is electrically connected to a second scan line which intersects with the first scan line. A plurality of pixels sharing a signal line have a second scan line in common. Meanwhile, a plurality of pixels sharing a first scan line have different signal lines from each other.

The two switching elements are switched separately by the two scan lines which intersect with each other. According to this, a video signal inputted to each pixel can be switched so that an image direction is switched from a first direction to a second direction which intersect with each other. It is to be noted that more typically, the first direction and the second direction may intersect perpendicular to each other such as a vertical direction and a horizontal direction. By adopting the aforementioned structure, a light emitting device can have a function for switching the image direction vertically to horizontally without a frame memory additionally provided. Further, more multiple functions of an electronic apparatus including the light emitting device can be achieved while reducing the size and weight thereof.

Note that, the light emitting device includes both a panel in which a light emitting element is sealed and a module in which IC and the like including a controller are mounted on the panel.

It is desirable that the channel length L of the driving transistor is desirably set longer than the channel width W thereof, and the channel length L of the current controlling transistor is set equal to or shorter than the channel width W thereof. More preferably, the ratio of the channel length L to the channel width W of the driving transistor is five or more. According to such a structure, it is possible to further suppress variations in luminance of a light emitting element between pixels, which are caused by variations in characteristics of driving transistors.

It is to be noted that a transistor used in the light emitting device of the invention may be a transistor using a single crystalline silicon, a transistor using an SOI, or a thin film transistor using a polycrystalline silicon or an amorphous silicon. Alternatively, a transistor using an organic semiconductor or a transistor using a carbon nanotube may be used as well. Further, a transistor used in a pixel of the light emitting device of the invention may have a single gate structure, a double gate structure, or a multi-gate structure comprising three or more gate electrodes.

According to the invention, light may be emitted from each side of the light emitting device, and an area for displaying images may be doubled by attaching the sides back to back. In the case of displaying different images on each side, a video signal corresponding to each display area is inputted alternately. By using such a dual emission display device, an area for displaying images can be enlarged while reducing the size and weight of the light emitting device.

By adopting the aforementioned structure, variations in luminance of a light emitting element due to variations in characteristics of TFTs and due to changes of a gate voltage V_{gs} can be reduced while not optimizing the process of transistors, and drop in luminance and luminance unevenness of the light emitting element due to deterioration of an electro luminescent material can also be reduced. Moreover, a function of switching an image direction vertically to horizontally can be added to the light emitting device without a frame memory additionally provided, and thus, multiple functions of an electronic apparatus using the light emitting device can be achieved while reducing the size and weight thereof.

BRIEF DESCRIPTION OF THE DRAWINGS

FIG. 1 is a circuit diagram showing an example of a pixel included in a light emitting device of the invention.

FIGS. 2A and 2B are block diagrams of a light emitting device, which show a scan direction and an input sequence of video signal.

FIGS. 3A and 3B are block diagrams of a light emitting device, which show a scan direction and an input sequence of video signal.

FIGS. 4A and 4B are views showing a structure of the light emitting device of the invention using a polarizer.

FIG. 5 is a circuit diagram showing an example of a pixel included in the light emitting device of the invention.

FIGS. 6A and 6B are circuit diagrams showing an example of a pixel included in the light emitting device of the invention.

FIGS. 7A and 7B are circuit diagrams showing an example of a pixel included in the light emitting device of the invention.

FIG. 8 is a circuit diagram showing an example of a pixel included in the light emitting device of the invention.

FIG. 9 is a diagram showing a configuration of a signal line driver circuit included in the light emitting device of the invention.

FIG. 10 is a diagram showing a configuration of a scan line driver circuit included in the light emitting device of the invention.

FIG. 11 is a top plan view of a pixel included in the light emitting device of the invention.

FIGS. 12A to 12C are cross sectional views of a light emitting element included in the light emitting device of the invention.

FIGS. 13A and 13B are diagrams showing a structure of a module of a light emitting device mounted in a mobile phone.

FIGS. 14A and 14B show electronic apparatuses using the light emitting device of the invention.

FIGS. 15A to 15C show portable information terminals to which the invention can be applied.

FIG. 16 is a cross sectional view of a pixel included in the light emitting device of the invention.

FIG. 17 is a cross sectional view of a pixel included in the light emitting device of the invention.

DETAILED DESCRIPTION OF THE INVENTION

Embodiment Mode 1

First, a configuration of a pixel included in the light emitting device of the invention will be described with reference to FIG. 1.

FIG. 1 shows an example of a pixel included in the light emitting device of the invention. The pixel shown in FIG. 1 comprises a light emitting element 101, two transistors (a first switching transistor 102 and a second switching transistor 103) used as switching elements for controlling a video signal input to the pixel, a driving transistor 104 for controlling a current value supplied to the light emitting element 101, and a current controlling transistor 105 for selecting whether a current is supplied to the light emitting element 101 or not. The pixel may also comprise a capacitor 106 for holding a video signal potential as shown in this embodiment mode.

The first switching transistor 102 and the second switching transistor 103 may have either the same conductivity or different conductivities. Although both the two switching transistors 102 and 103 have an n-type conductivity in FIG. 1, either or both of them may have a p-type conductivity. The driving transistor 104 and the current controlling transistor 105 have the same conductivity. These transistors 104 and 105 have a p-type conductivity in FIG. 1, however, they may have an n-type conductivity as well.

According to the invention, the driving transistor 104 is operated in a saturation region whereas the current controlling transistor 105 is operated in a linear region. The channel length L of the driving transistor 104 is preferably longer than the channel width W thereof, and the channel length L of the current controlling transistor 105 is preferably equal to or shorter than the channel width W thereof. More preferably, the ratio of the length L to the width W of the driving transistor 104 is five or more. In such a manner, variations in luminance of the light emitting element 101 between pixels due to variations in characteristics of the driving transistor 104 can be suppressed.

A gate of the first switching transistor 102 is connected to a first scan line Ghj (j=1 to y). On the other hand, a gate of the second switching transistor 103 is connected to a second scan line Gvi (i=1 to x). The first switching transistor 102 and the second switching transistor 103 are connected in series so as to control the connection between a signal line Si (i=1 to x) and a gate of the current controlling transistor 105. Specifically in FIG. 1, either a source or a drain of the first switching transistor 102 is connected to the signal line Si (i=1 to x), and either a source or a drain of the second switching transistor 103 is connected to the gate of the current controlling transistor 105.

Note that, the way of connecting the first switching transistor 102 and the second switching transistor 103 is not limited to that shown above. These switching transistors 102 and 103 need only to be connected in series so as to control the connection between the signal line Si (i=1 to x) and the gate of the current control transistor 105. Accordingly, for example, the arrangement of the first switching transistor 102 and the second switching transistor 103 may be exchanged.

The driving transistor 104 and the current controlling transistor 105 are connected to a first power supply line Vi (i=1 to x) and the light emitting element 101 so that a current from the first power supply line Vi (i=1 to x) is supplied to the light emitting element 101 as a drain current of the driving transistor 104 and the current controlling transistor 105. In this embodiment mode, a source of the current controlling transistor 105 is connected to the first power supply line Vi and a drain of the driving transistor 104 is connected to a pixel electrode of the light emitting element 101.

It is to be noted that a source of the driving transistor 104 may be connected to the first power supply line Vi (i=1 to x) and a drain of the current controlling transistor 105 may be connected to the pixel electrode of the light emitting element 101.

A gate of the driving transistor 104 is connected to a second power supply line Wi (i=1 to x) in FIG. 1. In the case where the gate of the driving transistor 104 is not connected to the first power supply line Vi (i=1 to x) but connected to the second power supply line Wi (i=1 to x) as shown in this embodiment mode, either an enhancement mode transistor or a depletion mode transistor may be used for the driving transistor 104. In particular, the depletion mode transistor allows an operation point to be set in a region of a saturation region, in which linearity of on-current relative to a gate voltage Vgs is higher. Therefore, as compared with the enhancement mode transistor, the depletion mode transistor is more suitable for suppressing variations in on-current when a threshold voltage, a subthreshold coefficient, mobility and the like are varied. A potential of the second power supply line Wi (i=1 to x) is set so that the driving transistor 104 is turned ON all the time.

The light emitting element 101 comprises an anode, a cathode, and an electro luminescent layer interposed between the anode and the cathode. When the driving transistor 104 is connected to the anode, the anode is referred to as a pixel electrode and the cathode is a counter electrode. The counter electrode of the light emitting element 101 and the first power supply line Vi (i=1 to x) have a potential difference so that a forward bias current is supplied to the light emitting element 101.

One of the two electrodes of the capacitor 106 is connected to the first power supply line Vi (i=1 to x), and the other is connected to the gate of the current controlling transistor 105. The capacitor 106 holds a potential difference

between the electrodes of the capacitor **106** when the first switching transistor **102** or the second switching transistor **103** is not selected (in the OFF state). It is to be noted that although the capacitor **106** is provided in FIG. 1, the invention is not limited to this structure and the capacitor **106** is not necessarily provided.

In FIG. 1, a p-channel transistor is used for both the driving transistor **104** and the current controlling transistor **105**, and the drain of the driving transistor **104** is connected to the anode of the light emitting element **101**. Meanwhile, when an n-channel transistor is used for both the driving transistor **104** and the current controlling transistor **105**, the source of the driving transistor **104** is connected to the cathode of the light emitting element **101**. In the latter case, the cathode of the light emitting element **101** serves as a pixel electrode whereas the anode thereof serves as a counter electrode.

Note that, the gate of the driving transistor **104** is connected to the second power supply line W_i in FIG. 1, however, the invention is not limited to this. The gate of the driving transistor **104** may be connected to the first power supply line V_i or the gate of the current controlling transistor **105** instead of the second power supply line W_i .

Next, a driving method of the pixel shown in FIG. 1 is described. The operation of the pixel shown in FIG. 1 is divided into a writing period and a holding period.

When the first scan line G_{hj} ($j=1$ to y) and the second scan line G_{vi} ($i=1$ to x) are selected in a writing period, the first switching transistor **102** having the gate connected to the first scan line G_{hj} ($j=1$ to y) and the second switching transistor **103** having the gate connected to the second scan line G_{vi} ($i=1$ to x) are both turned ON. Then, a video signal inputted to the signal line S_i ($i=1$ to x) is sequentially inputted to the gate of the current controlling transistor **105** via the first switching transistor **102** and the second switching transistor **103**. Note that, the gate of the driving transistor **104** is connected to the second power supply line W_i , and thus the driving transistor **104** is in the ON state all the time.

In the case where the current controlling transistor **105** is turned ON by a video signal, a current is supplied to the light emitting element **101** via the first power supply line V_i . Since the current controlling transistor **105** is operated in a linear region at this time, a current value supplied to the light emitting element **101** is determined by voltage-current characteristics of the driving transistor **104** operating in a saturation region and the light emitting element **101**. Then, the light emitting element **101** emits light at a luminance level corresponding to the supplied current value. In the case where the current controlling transistor **105** is turned OFF by a video signal, no current is supplied to the light emitting element **101** and thus the light emitting element **101** emits no light.

In a holding period, a potential of the first scan line G_{hj} ($j=1$ to y) or the second scan line G_{vi} ($i=1$ to x) is controlled to turn OFF either or both of the first switching transistor **102** and the second switching transistor **103**, thereby holding a video signal potential which has been written in the writing period. In the case of turning the current controlling transistor **105** ON in the writing period, a current supply to the light emitting element **101** is continued since the video signal potential is held by the capacitor **106**. On the other hand, in the case of turning the current controlling transistor **105** OFF in the writing period, no current is supplied to the light emitting element **101** since the video signal potential is held by the capacitor **106**.

The current controlling transistor **105** is operated in a linear region. Therefore, a voltage V_{ds} (drain voltage)

between the source and the drain of the current controlling transistor **105** is quite small relative to a voltage V_{el} applied to the light emitting element **101**, and a slight variation in a voltage V_{gs} (gate voltage) between the gate and the source does not affect a current supplied to the light emitting element **101**. The driving transistor **104** is operated in a saturation region. Accordingly, the drain current of the driving transistor **104** is not varied by the drain voltage V_{ds} thereof and thus determined only by the voltage V_{gs} thereof in a saturation region. That is, the current controlling transistor **105** selects only whether a current is supplied to the light emitting element **101** or not, and a current value supplied to the light emitting element **101** is determined by the driving transistor **104** operated in a saturation region. Thus, variations in current supplied to the light emitting element **101** can be suppressed without increasing the capacitance of the capacitor **106** provided between the gate and the source of the current controlling transistor **105** or reducing off-current of the first switching transistor **102**. Further, by operating the driving transistor **104** in a saturation region, the amount of the drain current of the driving transistor **104** can be kept at relatively constant even when the V_{ds} of the driving transistor **104** is lowered according to the V_{el} increasing as deterioration of the light emitting element **101**. According to this, drop in luminance can be suppressed even when the light emitting element **101** deteriorates.

Note that, when controlling operations of a first scan line driver circuit and a second scan line driver circuit from the beginning of a writing period in one pixel until the end of writing periods in all the pixels, a video signal inputted to each pixel can be switched leading to switching of an image direction from a first direction to a second direction which intersect with each other. Scan directions of each scan line before and after the switching of an image direction will be described hereinafter.

With reference to FIG. 2A, explanation is made on a scan direction of the first scan lines G_{h1} to G_{hy} in the case of selecting the second scan lines G_{v1} to G_{vx} all at once and selecting the first scan lines G_{h1} to G_{hy} in sequence. Reference numeral **113** denotes a pixel portion included in the light emitting device of the invention, **110** denotes a signal line driver circuit for controlling a video signal input to the signal line S_i , **111** denotes a first scan line driver circuit for selecting the first scan line G_{hj} , and **112** denotes a second scan line driver circuit for selecting the second scan line G_{vi} .

It is assumed that the pixel portion **113** comprises xy pixels. Each first scan line G_{hj} ($j=1$ to y) is shared by x pixels, and each second scan line G_{vi} ($i=1$ to x) is shared by y pixels. The y pixels sharing the second scan line G_{vi} ($i=1$ to x) have each signal line S_i ($i=1$ to x) in common. Meanwhile, the x pixels sharing the first scan line G_{hj} ($j=1$ to y) have different signal lines from each other.

Accordingly, in the case of selecting the first scan lines G_{h1} to G_{hy} in sequence and selecting the second scan lines G_{v1} to G_{vx} all at once, a video signal is sequentially inputted from each signal line S_i ($i=1$ to x) to x pixels sharing a selected first scan line. Then, a video signal is sequentially inputted from each signal line S_i ($i=1$ to x) to x pixels sharing the next selected first scan line. That is, when a video signal is sequentially inputted from the signal lines S_1 to S_x and the first scan line is sequentially selected from G_{h1} to G_{hy} , a video signal is sequentially inputted to each pixel in the direction of an arrow with a dotted line and the first scan line G_{hj} ($j=1$ to y) is sequentially scanned in a first scan direction shown by an arrow with a continuous line.

With reference to FIG. 2B, described is an operation of the light emitting device shown in FIG. 2A, in the case where the first scan lines Gh1 to Ghy are selected in the reverse order from the case shown in FIG. 2A and the second scan lines Gv1 to Gvx are selected in sequence.

In FIG. 2B, the first scan lines Gh1 to Ghy are selected in the reverse order from in FIG. 2A. Further, the second scan lines Gv1 to Gvx are selected in sequence during each period in which each of the first scan lines is selected. Thus, x pixels sharing a selected first scan line are sequentially selected by the second scan lines to input a video signal from the corresponding signal line to the selected pixel. Similarly, x pixels sharing the next selected first scan line are sequentially selected by the second scan lines to input a video signal from the corresponding signal line to the selected pixel.

That is, a video signal is sequentially inputted from the signal line S1 to Sx, the first scan line is sequentially selected from Ghy to Gh1 in a second scan direction shown by an arrow with a continuous line, and the second scan line is sequentially selected from Gv1 to Gvx in a third scan direction shown by an arrow with a continuous line. At this time, a video signal is inputted to each pixel in the direction of an arrow with a dotted line.

The second scan direction is opposite to the first scan direction. The third scan direction is set so that an input sequence of a video signal to the signal line is the same both in FIG. 2A and FIG. 2B.

In such a manner, a video signal inputted to each pixel can be switched between FIG. 2A and FIG. 2B, thereby changing an image direction. When assumed that the vertical direction of an image in FIG. 2A is a first direction and that of an image in FIG. 2B is a second direction, the first direction and the second direction intersect with each other.

Specifically, when x is equal to y, a video signal inputted to a pixel (j, i) having the first scan line Ghj and the second scan line Gvi is inputted to a pixel (i, j) having the first scan line Ghi and the second scan line Gvj. It is to be noted that when x is not equal to y, xy' ($y'=x-y$) pixels are prepared in the case of $x>y$, whereas x'y' ($x'=y-x$) pixels are prepared in the case of $y>x$. In the actual display, only xy pixels of the aforementioned pixels are used selectively, and the pixels which are not used for displaying images are used when switching an image direction. More specifically, the timing of a start pulse signal inputted to the signal line driver circuit, the first scan line driver circuit, and the second scan line driver circuit may be changed, or a dummy video signal may be inputted to a pixel which is not used.

It is to be noted that in the operation shown in FIG. 2B, the scan speed of the second scan line driver circuit 112 is slower than that of the first scan line driver circuit 111. Further in FIG. 2B, the signal line driver circuit 110 inputs a video signal to a pixel in synchronism with the scanning of the first scan line driver circuit 111.

As set forth above, according to the invention, an image direction can be switched between the first direction and the second direction which intersect with each other.

Embodiment Mode 2

Explained in this embodiment mode is a structure of the light emitting device of the invention in which light is emitted from each side of a light emitting element.

In the case of a dual emission display device, an image is inverted to be displayed on each screen. Therefore, when switching a display screen, it is necessary to change an input sequence of a video signal from a signal line driver circuit

to a signal line and a scan direction of a second scan line driver circuit as well as to change an image direction vertically to horizontally.

First, an operation for inverting the image shown in FIG. 2A left to right is explained with reference to FIG. 3A. In this case, the second scan lines Gv1 to Gvx are selected all at once as in FIG. 2A and the first scan lines Gh1 to Ghy are scanned in the same sequence as in FIG. 2A. In FIG. 3A, however, a video signal input from the signal line driver circuit 110 to the signal lines S1 to Sx is performed in the reverse order from in FIG. 2A. Thus, when a video signal is sequentially inputted from the signal line S1 to the signal line Sx in FIG. 2A, a video signal is sequentially inputted from the signal line Sx to the signal line S1 in FIG. 3A. According to the aforementioned structure, a video signal is sequentially inputted to each pixel in the direction of an arrow with a dotted line. Therefore, an image is inverted left to right, and thus, the image can be displayed in the original direction when seen from the other side.

Next, an operation for inverting the image shown in FIG. 2B left to right is described with reference to FIG. 3B. In this case, the first scan lines Gh1 to Ghy are scanned in the same sequence as in FIG. 2B. Further in FIG. 3B, the second scan lines Gv1 to Gvx are scanned in the reverse order from in FIG. 2B, and a video signal input from the signal line driver circuit 110 to the signal lines S1 to Sx is performed in the reverse order from in FIG. 2B. Accordingly, when the second scan line is sequentially scanned from Gv1 to Gvx in the third scan direction and a video signal is sequentially inputted from the signal line S1 to the signal line Sx in FIG. 2B, the second scan line is sequentially scanned from Gvx to Gv1 in a fourth direction which is the reverse direction from the second scan direction, and a video signal is sequentially inputted from the signal line Sx to the signal line S1 in FIG. 3B. According to the aforementioned structure, a video signal can be inputted to each pixel in the direction of an arrow with a dotted line. Therefore, an image is inverted left to right and upside down, and the image can be displayed with vertically or horizontally switched to the original direction when seen from the other side.

It is to be noted that in the operation shown in FIG. 3B, the scan speed of the second scan line driver circuit 112 is slower than that of the first scan line driver circuit 111. Further in FIG. 3B, the signal line driver circuit 110 inputs a video signal to a pixel in synchronism with the scanning of the first scan line driver circuit 111.

In order to reduce the operating frequency of the signal line driver circuit, a division driving method may be used. In the division driving method, pixels arranged in the first scan direction or the second scan direction are divided into groups of m pixels (m is a positive number of two or more, and a natural number in general), and video signals are simultaneously inputted to pixels in the same group during one scan period and sequentially inputted for every group. Since m pixels in the same group are selected at the same time in this driving method, an image direction is not inverted even when switching the scan direction. In order to change an image direction in the division driving method, video signals themselves have to be switched by using a frame memory so that the video signals inputted to the pixels in the same group are inverted. However, a frame memory required for changing an image direction vertically to horizontally in the division driving method is used for only changing the video signals corresponding to the m pixels. Thus, storage capacitor of the frame memory in the division driving method is much smaller as compared with that used for inverting all the video signals to change an image

direction vertically to horizontally while not changing the order of selecting a pixel. In the division driving method in which pixels are divided into groups of m pixels, the time for inputting video signals to each pixel is m times longer than that in the normal driving method when the length of one scan period is the same. Therefore, the operating frequency of the signal line driver circuit can be made one m -th smaller than that in the normal driving method.

A light emitting element included in the dual emission display device has light transmissive anode and cathode. Accordingly, outside light is transmitted to a panel **201** of the light emitting device as shown in FIG. **4A**, and thus the far side of the panel **201** is seen by human eyes. On the other hand, when polarizers **202** and **203** are disposed so that the polarization directions differ from each other, more preferably the polarization directions are 90° between them as shown in FIG. **4B**, outside light is transmitted to either the polarizer **202** or **203**. It is thus possible to prevent the far side from being seen and to enhance the contrast of an image. Further, a specific polarization component is transmitted to each of the polarizers **202** and **203**, therefore, light from the panel **201** can be emitted to each side.

It is to be noted that in order to enhance the contrast of an image, liquid crystal panels using liquid crystal elements may be disposed on both sides instead of the polarizers so as to transmit light emitted from the light emitting element to only one side.

The light emitting device of the invention can display color images as well as monochrome images. Any method can be adopted for displaying color images. For example, a white light emitting element may be used in combination with a color filter, light emitting elements corresponding to RGB may be used for full color display, or CCM method and the like may be adopted.

As described in this embodiment mode, image display on both sides contributes to enlarged screen for displaying images and reduced size and weight of the light emitting device. The invention is thus useful, especially for a portable electronic apparatus which is required to reduce the size and weight.

Embodiment Mode 3

Described in this embodiment mode is a configuration of the pixel shown in FIG. **1**, which is added with a function for stopping light emission of a light emitting element independently on a video signal.

FIG. **5** shows an example of a pixel included in the light emitting device of the invention. The pixel shown in FIG. **5** comprises a light emitting element **401**, two switching transistors **402** and **403** used as switching elements controlling a video signal input to the pixel, a driving transistor **404** for controlling a current value supplied to the light emitting element **401**, a current controlling transistor **405** for selecting whether a current is supplied to the light emitting element **401** or not, and two erasing transistors **407** and **408** for stopping light emission of the light emitting element **401**. The pixel may also comprise a capacitor **406** for holding a video signal potential as shown in this embodiment mode.

As in the pixel shown in FIG. **1**, the first switching transistor **402** and the second switching transistor **403** may have either the same conductivity or different conductivities. The driving transistor **404** and the current controlling transistor **405** have the same conductivity as in the pixel shown in FIG. **1**. Further, the driving transistor **404** is operated in a saturation region and the current controlling transistor **405** is operated in a linear region in FIG. **5** as well as in FIG. **1**. The first erasing transistor **407** and the second erasing

transistor **408** may have either the same conductivity or different conductivities. It is desirable that the channel length L of the driving transistor **404** is longer than the channel width W thereof and the channel length L of the current controlling transistor **405** is equal to or shorter than the channel width W thereof. More preferably, the ratio of the channel length L to the width W of the driving transistor **404** is five or more. According to such a structure, variations in luminance of the light emitting element in each pixel due to variations in characteristics of the driving transistor can be suppressed.

The pixel shown in FIG. **5** is different from the one shown in FIG. **1** in that the two erasing transistors **407** and **408** are connected in series between the current controlling transistor **405** and a power supply line V_i . A gate of the first erasing transistor **407** is connected to a first erasing scan line G_{ehj} ($j=1$ to y), and a gate of the second erasing transistor **408** is connected to a second erasing scan line G_{evi} ($i=1$ to x). When the first and the second erasing transistors **407** and **408** are both turned ON, a gate and a source of the current controlling transistor **405** are connected and the current controlling transistor **405** is turned OFF, thereby stopping light emission of the light emitting element **401** independently on a video signal.

Embodiment Mode 4

Described in this embodiment mode is a configuration of a pixel included in the light emitting device of the invention, which differs from those shown in FIGS. **1** and **5**.

FIG. **6A** shows an example of a pixel included in the light emitting device of the invention. The pixel shown in FIG. **6A** comprises a light emitting element **301**, two switching transistors **302** and **303** used as switching elements for controlling a video signal input to the pixel, a driving transistor **304** for controlling a current value supplied to the light emitting element **301**, and a current controlling transistor **305** for selecting whether a current is supplied to the light emitting element **301** or not. The pixel may also comprise a capacitor **306** for holding a video signal potential as shown in this embodiment mode.

As in the pixel shown in FIG. **1**, the first switching transistor **302** and the second switching transistor **303** may have either the same conductivity or different conductivities. The driving transistor **304** and the current controlling transistor **305** have the same conductivity as in the pixel shown in FIG. **1**. Further, the driving transistor **304** is operated in a saturation region and the current controlling transistor **305** is operated in a linear region in FIG. **6A** as well as in FIG. **1**. It is desirable that the channel length L of the driving transistor **304** is longer than the channel width W thereof and the channel length L of the current controlling transistor **305** is equal to or shorter than the channel width W thereof. More preferably, the ratio of the channel length L to the width W of the driving transistor **304** is five or more. According to such a structure, variations in luminance of the light emitting element in each pixel due to variations in characteristics of the driving transistor can be suppressed.

The pixel shown in FIG. **6A** is different from the one shown in FIG. **1** in that a gate of the driving transistor **304** as well as a source of the current controlling transistor **305** is connected to a power supply line V_i . Since a depletion mode transistor is used for the driving transistor **304** in the pixel shown in FIG. **6A**, an operation point can be set in a region of a saturation region, in which linearity of on-current relative to a gate voltage V_{gs} is higher. Accordingly, as compared with an enhancement mode transistor, the depletion mode driving transistor **304** is suitable for suppressing

13

variations in on-current when a threshold voltage, a sub-threshold coefficient, mobility and the like are varied. For the transistors other than the driving transistor 304, either an normal enhancement mode transistor or a depletion mode transistor may be used.

Explanation is hereinafter made on a configuration of the pixel shown in FIG. 6A, which is added with a function for stopping light emission of a light emitting element independently on a video signal.

FIG. 6B shows an example of a pixel included in the light emitting device of the invention. The pixel shown in FIG. 6B comprises a light emitting element 311, two switching transistors 312 and 313 used as switching elements for controlling a video signal input to the pixel, a driving transistor 314 for controlling a current value supplied to the light emitting element 311, a current controlling transistor 315 for selecting whether a current is supplied to the light emitting element 311 or not, and two erasing transistors 317 and 318 for stopping light emission of the light emitting element 311. The pixel may also comprise a capacitor 316 for holding a video signal potential as shown in this embodiment mode.

As in the pixel shown in FIG. 6A, the first switching transistor 312 and the second switching transistor 313 may have either the same conductivity or different conductivities. The driving transistor 314 and the current controlling transistor 315 have the same conductivity as in the pixel shown in FIG. 6A. Further, the driving transistor 314 is operated in a saturation region and the current controlling transistor 315 is operated in a linear region in FIG. 6B as well as in FIG. 6A. The first erasing transistor 317 and the second erasing transistor 318 may have either the same conductivity or different conductivities. It is desirable that the channel length L of the driving transistor 314 is longer than the channel width W thereof and the channel length L of the current controlling transistor 315 is equal to or shorter than the channel width W thereof. More preferably, the ratio of the channel length L to the width W of the driving transistor 314 is five or more. According to such a structure, variations in luminance of the light emitting element in each pixel due to variations in characteristics of the driving transistor can be suppressed.

The pixel shown in FIG. 6B is different from the one shown in FIG. 6A in that the two erasing transistors 317 and 318 are connected in series between the current controlling transistor 315 and a power supply line Vi. A gate of the first erasing transistor 317 is connected to a first erasing scan line Gehj (j=1 to y), and a gate of the second erasing transistor 318 is connected to a second erasing scan line Gevi (i=1 to x). When the first and the second erasing transistors 317 and 318 are both turned ON, a gate and a source the current controlling transistor 315 are connected and the current controlling transistor 315 is turned OFF, thereby stopping light emission of the light emitting element 311 independently on a video signal.

Embodiment Mode 5

Described in this embodiment mode is a configuration of a pixel included in the light emitting device of the invention, which differs from those shown in FIGS. 1, 5, and 6A and 6B.

FIG. 7A shows an example of a pixel included in the light emitting device of the invention. The pixel shown in FIG. 7A comprises a light emitting element 501, two switching transistors 502 and 503 used as switching elements for controlling a video signal input to the pixel, a driving transistor 504 for controlling a current value supplied to the

14

light emitting element 501, and a current controlling transistor 505 for selecting whether a current is supplied to the light emitting element 501 or not. The pixel may also comprise a capacitor 506 for holding a video signal potential as shown in this embodiment mode.

As in the pixel shown in FIG. 1, the first switching transistor 502 and the second switching transistor 503 may have either the same conductivity or different conductivities. The driving transistor 504 and the current controlling transistor 505 have the same conductivity as in the pixel shown in FIG. 1. In FIG. 7A, the ratio L/W of the driving transistor 504 is made larger than the ratio L/W of the current controlling transistor 505, and the driving transistor 504 is operated in a saturation region whereas the current controlling transistor 505 is operated in a linear region. Specifically in the driving transistor 504, the channel length L is set longer than the channel width W thereof, and more preferably set five or more times longer. Further, the channel length L of the current controlling transistor 505 is set equal to or shorter than the channel width W thereof.

The pixel shown in FIG. 7A is different from the one shown in FIG. 1 in that a gate of the driving transistor 504 is connected to a gate of the current controlling transistor 505. Either an enhancement mode transistor or a depletion mode transistor may be used for the driving transistor 504 in the pixel shown in FIG. 7A. In particular, by using the depletion mode transistor, an operation point can be set in a region of a saturation region, in which linearity of on-current relative to a gate voltage Vgs is higher. Thus, as compared with the enhancement mode transistor, the depletion mode transistor is suitable for suppressing variations in on-current when a threshold voltage, a subthreshold coefficient, mobility and the like are varied.

Explanation is hereinafter made on a configuration of the pixel shown in FIG. 7A, which is added with a function for stopping light emission of the light emitting element independently on a video signal.

FIG. 7B shows an example of a pixel included in the light emitting device of the invention. The pixel shown in FIG. 7B comprises a light emitting element 511, two switching transistors 512 and 513 used as switching elements for controlling a video signal input to the pixel, a driving transistor 514 for controlling a current value supplied to the light emitting element 511, a current controlling transistor 515 for selecting whether a current is supplied to the light emitting element 511 or not, and two erasing transistors 517 and 518 for stopping light emission of the light emitting element 511. The pixel may also comprise a capacitor 516 for holding a video signal potential as shown in this embodiment mode.

As in the pixel shown in FIG. 7A, the first switching transistor 512 and the second switching transistor 513 may have either the same conductivity or different conductivities. The driving transistor 514 and the current controlling transistor 515 have the same conductivity as in the pixel shown in FIG. 7A. Further, the driving transistor 514 is operated in a saturation region and the current controlling transistor 515 is operated in a linear region in FIG. 7B as well as in FIG. 7A. The first erasing transistor 517 and the second erasing transistor 518 may have either the same conductivity or different conductivities.

The pixel shown in FIG. 7B is different from the one shown in FIG. 7A in that the two erasing transistors 517 and 518 are connected in series between the current controlling transistor 515 and a power supply line Vi. A gate of the first erasing transistor 517 is connected to a first erasing scan line Gehj (j=1 to y), and a gate of the second erasing transistor

15

518 is connected to a second erasing scan line G_{vi} ($i=1$ to x). When the first and the second erasing transistors **517** and **518** are both turned ON, a gate and a source of the current controlling transistor **515** are connected and the current controlling transistor **515** is turned OFF, thereby stopping light emission of the light emitting element **511** independently on a video signal.

Embodiment Mode 6

Described in this embodiment mode is a configuration of a pixel included in the light emitting device of the invention, which differs from those shown in FIGS. 1, 5, 6A and 6B, and 7A and 7B.

FIG. 8 shows an example of a pixel included in the light emitting device of the invention. The pixel shown in FIG. 8 comprises a light emitting element **601**, two switching transistors **602** and **603** used as switching elements for controlling a video signal input to the pixel, a driving transistor **604** for controlling a current value supplied to the light emitting element **601**, a current controlling transistor **605** for selecting whether a current is supplied to the light emitting element **601** or not, and an erasing transistor **607** for stopping light emission of the light emitting element **601**. The pixel may also comprise a capacitor **606** for holding a video signal potential as shown in this embodiment mode.

As in the pixel shown in FIG. 1, the first switching transistor **602** and the second switching transistor **603** may have either the same conductivity or different conductivities in the pixel shown in FIG. 8. Further, the driving transistor **604** and the current controlling transistor **605** have the same conductivity as in FIG. 1. It is desirable that the channel length L of the driving transistor **604** is longer than the channel width W thereof and the channel length L of the current controlling transistor **605** is equal to or shorter than the channel width W thereof. More preferably, the ratio of the channel length L to the channel width W of the driving transistor **604** is five or more. According to such a structure, variations in luminance of the light emitting element in each pixel due to variations in characteristics of the driving transistor can be suppressed.

The pixel shown in FIG. 8 is different from the one shown in FIG. 1 in that a gate of the driving transistor **604** is connected to a first erasing scan line G_{hj} ($j=1$ to y) and a gate of the erasing transistor **607** is connected to a second erasing scan line G_{vi} ($i=1$ to x). The erasing transistor **607** is connected between the current controlling transistor **605** and a power supply line V_i ($i=1$ to x). Either an enhancement mode transistor or a depletion mode transistor may be used for the driving transistor **604** in the pixel shown in FIG. 8. In particular, by using the depletion mode transistor, an operation point can be set in a region of a saturation region, in which linearity of on-current relative to a gate voltage V_{gs} is higher. Therefore, as compared with the enhancement mode transistor, the depletion mode transistor is more suitable for suppressing variations in on-current when a threshold voltage, a subthreshold voltage, mobility and the like are varied. When either or both of the driving transistor **604** and the erasing transistor **607** are turned OFF, it is possible to stop light emission of the light emitting element **601** independently on a video signal.

It is to be noted that the erasing transistor **607** and the driving transistor **604** need only to be connected so as to control the supply of a drain current of the current controlling transistor **605** to the light emitting element **601**. Therefore, the arrangement of the erasing transistor **607**, the driving transistor **604** and the current controlling transistor **605** is not limited to the one shown in FIG. 8, and they need

16

only to be connected in series between the light emitting element **601** and the power supply line V_i .

Embodiment 1

FIG. 9 is a circuit diagram of a signal line driver circuit included in the light emitting device of the invention, which is capable of switching an input sequence of a video signal to each pixel. In FIG. 9, reference numeral **1301** denotes a shift register which generates a timing signal for determining the sampling timing of a video signal by using a clock signal CK, an inverted clock signal CKb obtained by inverting the clock signal CK, and a start pulse signal SP.

The shift register **1301** comprises a plurality of flip flops **1310**, and a plurality of pairs of transmission gates **1311** and **1312** each of which pairs corresponds to each of the flip flops **1310**. The switching of the transmission gates **1311** and **1312** are controlled by a switching signal L/R so that when one of the transmission gates is turned ON, the other is turned OFF.

In the case where the transmission gate **1311** is turned ON, the start pulse signal is supplied to the most left flip flop **1310**, thus the shift register **1301** functions from left to right. On the other hand, the transmission gate **1312** is turned ON, the start pulse signal is supplied to the most right flip flop **1310**, thus the shift register **1301** functions from right to left.

The timing signal generated in the shift register **1301** is buffered and amplified in a plurality of inverters **1302** and transmitted to a transmission gate **1303**. It is to be noted that only one circuit group (the inverter **1302** and the transmission gate **1303** here) preceded by an output of the shift register **1301** is shown in FIG. 9, though actually a plurality of circuit groups corresponding to the other outputs of the shift register are provided.

The switching of the transmission gate **1303** is controlled by the timing signal which has been buffered and amplified. When the transmission gate **1303** is turned ON, a video signal is sampled to be supplied to each pixel of a pixel portion. In the case where the shift register **1301** functions from left to right, the scan direction is also from left to right. Meanwhile, in the case where the shift register **1301** functions from right to left, the scan direction is also from right to left. Note that the transmission gate **1303** is not necessarily used, and other circuit such as a level shifter which functions as a switch may be used instead.

FIG. 10 is a circuit diagram of a first or a second scan line driver circuit of this embodiment. In FIG. 10, reference numeral **1401** denotes a shift register which has the same configuration as the shift register **1301** shown in FIG. 9, and the switching of the scan direction is controlled by a switching signal L/R. However, a timing signal generated in the shift register **1401** is used for selecting pixels in each row.

The timing signal generated in the shift register **1401** is buffered and amplified in an inverter **1402** and then inputted to a pixel. It is to be noted that only one circuit (the inverter **1402** here) preceded by an output of the shift register **1401** is shown in FIG. 10, though actually a plurality of circuits corresponding to other outputs of the shift register are provided.

The driver circuits shown in this embodiment are just examples applicable to the light emitting device of the invention, and the invention is not limited to these.

Embodiment 2

An example of a top plan view of the pixel shown in FIG. 1 is described hereinafter. In this embodiment, however, the places of the first switching transistor **102** and the second switching transistor **103** are exchanged.

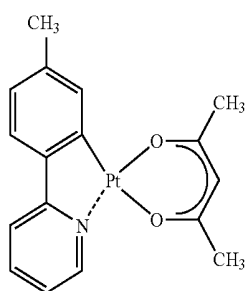
FIG. 11 is a top plan view of a pixel of this embodiment. In FIG. 11, Si is a signal line, Vi is a first power supply line, Wi is a second power supply line, Ghj is a first scan line, and Gvi is a second scan line. In this embodiment, the signal line Si, the first power supply line Vi, the second power supply line Wi, and the second scan line Gvi are formed of the same conductive layer. A part of the first scan line Ghj functions as a gate electrode of the first switching transistor 102. A gate electrode of the second switching transistor 103 is connected to the second scan line Gvi. An active layer of the driving transistor 104 has meander shape so that the ratio L/W thereof is larger than that of the current controlling transistor 105. Reference numeral 107 denotes a pixel electrode, and light is emitted in an overlapping area (a light emitting area) 108 of the pixel electrode 107 with an electro luminescent layer and a cathode (not shown).

Needless to say, the top plan view of this embodiment is just an example and the invention is not limited to this.

Embodiment 3

Described in this embodiment is an example of a structure of a light emitting element used in the light emitting device of the invention in the case of dual emission.

FIG. 12A is a pattern diagram showing a cross section of a light emitting element of this embodiment. In the light emitting element shown in FIG. 12A, an anode 701 formed of ITO which is a transparent conductive film, a hole injection layer 702 formed of copper phthalocyanine (CuPc), a first light emitting layer 703 formed of 4,4'-bis[N-(1-naphthyl)-N-phenyl-amino]-biphenyl (abbreviated to α -NPD), a second light emitting layer 704 formed of 4,4'-N,N'-dicarbazolyl-biphenyl (abbreviated to CBP) which is to be a guest and Pt (ppy) acac which is to be a host, an electron transport layer 705 formed of bathocuproine (BCP), an electron injection layer 706 formed of CaF_2 , and a cathode 707 formed of Al are laminated in this order. Note that, Pt (ppy) acac is represented by the structural formula shown below.



Structural Formula 1

In this embodiment, the cathode 707 is formed thin enough to transmit light, specifically so as to have a thickness of about 20 nm, thereby realizing dual emission.

In the second light emitting layer 704 of the light emitting element shown in FIG. 12A, phosphorescence and excimer emission are both provided from a phosphorescent material when a phosphorous material CBP which is to be a guest is dispersed in a host material Pt (ppy) acac at a concentration of 10 wt % or more. Specifically, it is desirable that the phosphorescent material provides light emission having at least two peaks in a region of 500 to 700 nm, and either of the two peaks is the excimer emission. The first light emitting layer 703 provides blue light whose emission spectrum has the peak in a region of 400 to 500 nm, and when the blue emission is mixed with the light emission

from the second light emitting layer 704, white emission having color purity more close to 0 can be achieved. Further, as only one kind of doping material is used, emission spectrum is not changed even when varying the current density or driving continuously, leading to stable supply of white emission. Note that, the first light emitting layer may be obtained by dispersing in a host material a guest material supplying blue light whose emission spectrum has the peak in a region of 400 to 500 nm.

FIG. 12B is a pattern diagram showing a cross section of a light emitting element included in the light emitting device of the invention, which is different from the one shown in FIG. 12A. In the light emitting element shown in FIG. 12B, an anode 711 formed of ITO which is a transparent conductive film, a hole injection layer 712 formed of polythiophene, a hole transport layer 713 formed of N,N'-bis(3-methylphenyl)-N,N'-diphenyl-1,1'-biphenyl-4,4'-diamine (abbreviated to TPD), a first light emitting layer 714 formed of rubrene which is to be a guest and TPD which is to be a host, a second light emitting layer 715 formed of coumarin 6 which is to be a guest and Alq_3 which is to be a host, and a cathode 716 formed of MgAg are laminated in this order.

Similarly in FIG. 12B, the cathode 716 is formed thin enough to transmit light, specifically so as to have a thickness of about 20 nm, thereby realizing dual emission of white light.

FIG. 12C is a pattern diagram showing a cross section of a light emitting element included in the light emitting device of the invention, which is different from the one shown in FIG. 12A. In the light emitting element shown in FIG. 12C, an anode 721 formed of ITO which is a transparent conductive film, a hole injection layer 722 formed of HIM34, a hole transport layer 723 formed of tetraaryl benzidine derivative, a first light emitting layer 724 formed of naphthalene derivative which is to be a guest and tetraaryl benzidine derivative and phenyl anthracene derivative which are to be hosts, a second light emitting layer 725 formed of styryl amine derivative which is to be a guest and tetraaryl benzidine derivative and phenyl anthracene derivative which are to be hosts, an electron transport layer 726 formed of phenyl anthracene derivative, an electron injection layer 727 formed of Alq_3 , a first cathode 728 formed of CsI, and a second cathode 729 formed of MgAg are laminated in this order.

Similarly in FIG. 12C, the first cathode 728 and the second cathode 729 are formed so that the total thickness is thin enough to transmit light, specifically about 20 nm, thereby realizing dual emission of white light.

It is to be noted that the laminated structure of the light emitting element is not limited to these shown in FIGS. 12A to 12C. In order to emit light from the cathode, ITO whose work function is made smaller by adding Li may be used instead of reducing the thickness of the cathode. In the invention, any structure of the light emitting element may be adopted as long as light is emitted from both the anode and the cathode.

Embodiment 4

FIG. 13A shows an inside structure of a mobile phone which is one of the electronic apparatuses using the light emitting device of the invention. A module of the mobile phone shown in FIG. 13A comprises a printed circuit board 946. On the printed circuit board 946, a controller 901, a CPU 902, a memory 911, a power supply circuit 903, an audio processing circuit 929, and a sending and receiving circuit 904 are mounted as well as other components such as a resistor, a buffer, and a capacitor. Further, a panel 900 is

connected to the printed circuit board **946** via an FPC **908**. The panel **900** comprises a pixel portion **905** including pixels each provided with a light emitting element, a first scan line driver circuit **906** and a second scan line driver circuit **915** for selecting a pixel of the pixel portion **905**, and a signal line driver circuit **907** for supplying a video signal to the selected pixel.

A power supply voltage and various signals inputted from a keyboard and the like are supplied to the printed circuit board **946** via an interface (I/F) **909** for printed circuit board having a plurality of input terminals. The printed circuit board **946** comprises also an antenna port **910** for transferring a signal to and from the antenna.

Although the panel **900** is connected to the printed circuit board **946** via the FPC **908** in this embodiment, the invention is not exclusively limited to this structure. The controller **901**, the audio processing circuit **929**, the memory **911**, the CPU **902**, and the power supply circuit **903** may be mounted directly on the panel **900** by COG (Chip On Glass).

In the printed circuit board **946**, noises may occur in a power supply voltage and a signal, or a rising edge of a signal may be rounded due to a capacitance between lead wirings, resistance of the wiring itself and the like. Thus, components such as a capacitor and a buffer may be provided on the printed circuit board **946** in order to prevent noises from occurring in a power supply voltage and a signal or prevent a rising edge of a signal from being rounded.

FIG. 13B is a block diagram of the module shown in FIG. 13A.

In this embodiment, the memory **911** includes a VRAM **932**, a DRAM **925**, a flash memory **926** and the like. The VRAM **932** stores image data to be displayed on the panel, the DRAM **925** stores image data or audio data, and the flash memory **926** stores various types of programs.

The power supply circuit **903** generates a power supply voltage supplied to the panel **900**, the controller **901**, the CPU **902**, the audio processing circuit **929**, the memory **911**, and the sending and receiving circuit **904**. Depending on the panel specification, the power supply circuit **903** may have a current source.

The CPU **902** includes a control signal generating circuit **920**, a decoder **921**, a register **922**, an operation circuit **923**, a RAM **924**, an interface **935** for CPU and the like. Each signal inputted to the CPU **902** via the interface **935** is temporarily stored in the register **922**, and then inputted to the operation circuit **923**, the decoder **921** and the like. In the operation circuit **923**, an operation is carried out in accordance with the inputted signal and the location to be sent each instruction is addressed. Meanwhile, the signal inputted to the decoder **921** is decoded and inputted to the control signal generating circuit **920**. The control signal generating circuit **920** generates signals including various instructions in accordance with the inputted signal, and sends the signals to the location addressed by the operation circuit **923**, specifically to the memory **911**, the sending and receiving circuit **904**, the audio processing circuit **929**, the controller **901** and the like.

The memory **911**, the sending and receiving circuit **904**, the audio processing circuit **929**, and the controller **901** are operated in accordance with a received instruction. Their operations are briefly described hereinafter.

A signal inputted from a keyboard **931** is sent to the CPU **902** mounted on the printed circuit board **946** via the interface **909**. The control signal generating circuit **920** converts image data stored in the VRAM **932** into the predetermined format depending on a signal from the keyboard **931**, and then sends it to the controller **901**.

The controller **901** performs the processing of the signal including image data which has been sent from the CPU **902** in accordance with the panel specification, and supplies the signal to the panel **900**. Further, the controller **901** generates an Hsync signal, a Vsync signal, a clock signal CLK, an AC voltage (AC cont), and a switching signal L/R in accordance with the power supply voltage inputted from the power supply circuit **903** and with each signal inputted from the CPU **902**, and then supplies these signals to the panel **900**.

A signal is sent and received as radio wave in an antenna **933**, and it is processed in the sending and receiving circuit **904**. Specifically, the sending and receiving circuit **904** includes high frequency circuits such as an isolator, a band pass filter, a VCO (Voltage Controlled Oscillator), an LPF (Low Pass Filter), a coupler, and a balun. Among the signals sent and received in the sending and receiving circuit **904**, a signal including audio data is sent to the audio processing circuit **929** in accordance with an instruction from the CPU **902**.

The signal including audio data which has been sent depending on an instruction from the CPU **902** is demodulated into an audio signal in the audio processing circuit **929**, and then sent to a speaker **929**. Meanwhile, an audio signal which has been sent from a microphone **927** is modulated in the audio processing circuit **929**, and then sent to the sending and receiving circuit **904** in accordance with an instruction from the CPU **902**.

The controller **901**, the CPU **902**, the power supply circuit **903**, the audio processing circuit **929**, and the memory **911** can be mounted as a package of the invention. The invention can be applied to any circuit other than high frequency circuits such as an isolator, a band pass filter, a VCO (Voltage Controlled Oscillator), an LPF (Low Pass Filter), a coupler, and a balun.

Embodiment 5

The light emitting device of the invention can be applied to various types of electronic apparatuses. In particular, it is quite useful to apply the light emitting device of the invention to a portable electronic apparatus whose usability is drastically improved by increasing the screen size while reducing the weight and size of the apparatus. The light emitting device of the invention is applicable to electronic apparatuses such as a video camera, a digital camera, a goggle type display (head mounted display), a navigation system, an audio reproducing device (an in-car audio system, a component stereo and the like), a notebook personal computer, a game machine, a portable information terminal (a mobile computer, a mobile phone, a portable game machine, an electronic book and the like), and a device such as an image reproducing device provided with a recording medium (specifically, a DVD: Digital Versatile Disc and the like), which is capable of reproducing a recording medium and comprises a display for displaying the reproduced image. As an example of the electronic apparatuses using the invention, a mobile phone is shown in FIGS. 14A and 14B.

FIG. 14A shows a mobile phone which includes a main body **2201**, a housing **2202**, display portions **2203** and **2204**, an audio input portion **2205**, an audio output portion **2206**, an operation key **2207**, an antenna **2208** and the like. In FIG. 14A, the dual emission display device of the invention can be applied to the display portion **2203**.

FIG. 14B shows the mobile phone shown in FIG. 14A, in which the display portion **2203** using the dual emission display device of the invention is rotated to the direction shown by an arrow and the image direction is switched vertically to horizontally. The switching of a displayed

image direction can be performed by providing a sensor in a hinge for connecting the display portion 2203 and the main body 2201, and controlling an operation of a signal line driver circuit or a scan line driver circuit of the display device by using the sensor.

FIG. 15A shows a portable information terminal (PDA) which includes a main body 2101, a housing 2102, a display portion 2103, an operation key 2104, an antenna 2105 and the like. The dual emission display device of the invention is applied to the display portion 2103 of the portable information terminal shown in FIG. 15A. When the housing 2102 is rotated along a hinge 2106 as shown in FIG. 15B, the other surface of the display portion 2103 can be seen. A display portion 2107 using another light emitting device may be provided in an overlapping area of the main body 2101 and the housing 2102.

Further, as shown in FIG. 15C, the display portion 2103 may be rotated along an axis of rotation which is perpendicular to the axis of rotation shown in FIG. 15B.

As set forth above, the application range of the invention is so wide that it can be applied to electronic apparatuses in all fields. The light emitting device used for the electronic apparatuses described in this embodiment may have any one of configurations shown in Embodiments 1 to 4.

Embodiment 6

With reference to FIG. 16, a cross sectional structure of a pixel included in the light emitting device of the invention is explained. In FIG. 16, a transistor 6001 is formed over a substrate 6000. The transistor 6001 is covered with a first interlayer insulating film 6002, and over the first interlayer insulating film 6002, a color filter 6003 formed of a resin and the like and a wiring 6004 electrically connected to the transistor 6001 through a contact hole are formed.

A second interlayer insulating film 6005 is formed over the first interlayer insulating film 6002 so as to cover the color filter 6003 and the wiring 6004. For the first interlayer insulating film 6002 or the second interlayer insulating film 6005, a silicon oxide film, a silicon nitride film, or a silicon oxynitride film is formed to be a single layer or a plurality of layers by plasma CVD or sputtering. Alternatively, a silicon oxynitride film having a higher molar ratio of oxygen to nitrogen may be laminated on a silicon nitride oxide film having a higher molar ratio of nitrogen to oxygen in order to form the first interlayer insulating film 6002 or the second interlayer insulating film 6005. An organic resin film may also be used for the first interlayer insulating film 6002 or the second interlayer insulating film 6005.

A wiring 6006 is formed on the second interlayer insulating film 6005 and electrically connected to the wiring 6004 through a contact hole. A part of the wiring 6006 functions as an anode of a light emitting element. The wiring 6006 is formed so as to overlap with the color filter 6003 with the second interlayer insulating film 6005 interposed therebetween.

Over the second interlayer insulating film 6005, an organic resin film 6008 used as a bank is formed. The organic resin film 6008 comprises an opening portion, and the wiring 6006 serving as an anode, an electro luminescent layer 6009, and a cathode 6010 are overlapped with each other in the opening portion to form a light emitting element 6011. The electro luminescent layer 6009 is formed of a single light emitting layer or a plurality of laminated layers including a light emitting layer. It is to be noted that a protective layer may be provided over the organic resin film 6008 and the cathode 6010. In this case, the protective layer is formed of a film which transmits a substance such as

moisture and oxygen with difficulty as compared with other insulating films in order to prevent such a substance from being absorbed in the light emitting element and accelerating deterioration of the light emitting element. Typically, for example, a DLC film, a carbon nitride film, a silicon nitride film formed by RF sputtering are desirably used. It is also possible to use for the protective layer a laminated layer of a layer which transmits the moisture, the oxygen and the like with difficulty and a layer which transmits the moisture, the oxygen and the like with ease.

The organic resin film 6008 is heated in a vacuum atmosphere in order to remove absorbed moisture and oxygen before forming the electro luminescent layer 6009. Specifically, heat treatment is applied in a vacuum atmosphere, at a temperature of from 100 to 200° C. and for approximately 0.5 to 1 hour. The vacuum is desirably set at 3×10^{-7} Torr or less, and if possible at 3×10^{-8} Torr or less. In the case where the electro luminescent layer 6009 is formed after applying the heat treatment to the organic resin film 6008 in the vacuum atmosphere, the reliability can be further improved by maintaining the electro luminescent layer 6009 in the vacuum atmosphere until immediately before the deposition.

End portions of the opening portion of the organic resin film 6008 are preferably formed to be roundish. According to this, the electro luminescent layer 6009 overlapped partly with the organic resin film 6008 can be prevented from being broken at the end portions. Specifically, a radius of curvature of a curve which is drawn by a cross section of the organic resin film in the opening portion is desirably in the range of 0.2 to 2 μm approximately.

According to the aforementioned structure, the coverage of an electro luminescent layer and a cathode which are formed later can be improved, and the wiring 6006 and the cathode 6010 can be inhibited from being short circuited in a hole formed in the electro luminescent layer 6009. Moreover, by alleviating the stress of the electro luminescent layer 6009, a defect called shrink in which a light emitting region is diminished can be suppressed and thus, the reliability can be enhanced.

In FIG. 16, a positive working photosensitive acryl resin is used as the organic resin film 6008. The photosensitive organic resin includes a positive type in which a portion exposed with an energy beam such as light, electrons, and ions is removed, and a negative type in which the exposed portion remains. In the invention, a negative working organic resin film may be used as well. Also, the organic resin film 6008 may be formed using photosensitive polyimide. When forming the organic resin film 6008 by using negative working acryl, a sectional shape of the end portions of the opening portion has an S-like shape. At this time, a radius of curvature at the upper and the lower end portions of the opening portion is desirably in the range of 0.2 to 2 μm .

The wiring 6006 may be formed of a transparent conductive film provided by mixing 2 to 20% of zinc oxide (ZnO) with indium oxide as well as ITO. In FIG. 16, the ITO is used for the wiring 6006. The surface of the wiring 6006 may be polished by CMP and cleaned by a swab using a polyvinyl alcohol porous body to be flat. After rubbing it by CMP, irradiation of UV rays, oxygen plasma processing and the like may be performed to polish the surface of the wiring 6006.

The cathode 6010 is formed thin enough to transmit light, and may be formed of any one of known conductive layers with a small work function, preferably using a material such as Ca, Al, CaF, MgAg and AlLi. It is to be noted that in order

to emit light from the cathode, ITO whose work function is made smaller by adding Li may be used instead of reducing the thickness of the cathode. In the invention, any structure of the light emitting element may be adopted as long as light is emitted from both the anode and the cathode.

Actually, when the pixel has been completed to the stage shown in FIG. 16, it is preferable that it is packaged with a light transmissive covering material **6012** or a protective film (laminated film, UV ray curable resin film and the like) whose air tight sealing characteristic is high and which has less amount of degassing so as not to be exposed to the atmosphere. At that time, the reliability of the OLED is enhanced when the inside of the covering material is filled with an inert atmosphere or a moisture absorption material (e.g., barium oxide) is disposed inside. Moreover in the invention, a color filter **6013** may be attached to the cover material **6012**.

It is to be noted that the invention is not limited to the aforementioned manufacturing method, and can be formed by other known methods.

Embodiment 7

In general, transmittance of a color filter differs from color to color, and therefore, luminance of a light emitting element after transmitting the color filter differs from color to color. The luminance of each color required for obtaining white light is not necessarily equal, but it has to be adjusted in order to get balanced white light. In general, different power supply line potentials are supplied to each pixel for displaying different colors in order to get balanced white light.

In this embodiment, a different example from the one described above is explained, in which the same power supply line potential is supplied to all pixels of the light emitting device of the invention capable of performing full color display, and white light is balanced by using a shielding film capable of partly shielding light emitted from a light emitting element.

FIG. 17 is a cross sectional view of a pixel included in a light emitting device of this embodiment. Reference numerals **7001** to **7003** denote light emitting elements corresponding to a red (R) color filter **7004r**, a green (G) color filter **7004g**, and a blue color filter **7004b**, respectively. The red (R) color filter **7004r**, the green (G) color filter **7004g**, and the blue color filter **7004b** are separated from each other with shielding films **7005** interposed therebetween. The shielding films **7005** are provided for shielding light emitted from the light emitting elements **7001** to **7003**. Accordingly, light emitted from the light emitting elements **7001** to **7003** are transmitted to the color filters **7004r**, **7004g**, and **7004b**.

In this embodiment, light emitted from the light emitting elements **7001** to **7003** is turned to the opposite direction of a substrate **7008** on which TFTs **7007** are formed. Therefore, the color filters **7004r**, **7004g** and **7004b**, and the shielding film **7005** are provided on the opposite side of the substrate **7008** with the light emitting elements **7001** to **7003** interposed therebetween. The invention, however, is not limited to this structure, and light emitted from the light emitting elements **7001** to **7003** may be turned to the direction of the substrate **7008**. In such a case, the color filters **7004r**, **7004g** and **7004b**, and the shielding film **7005** are provided on the side to which light from the light emitting elements **7001** to **7003** is emitted.

In this embodiment, layout of the shielding films **7005** is adjusted to change the area to which light is transmitted in each of the color filters **7004r**, **7004g** and **7004b**. Specifically, the layout of the shielding films **7005** is adjusted so as to make a color filter required to have a higher luminance larger and make a color filter required to have a lower luminance smaller. According to the aforementioned structure, the luminance of each color can be adjusted without

changing the current density of the light emitting element, and white light can be balanced without increasing the number of power supply lines.

Although the light emitting device shown in FIG. 17 performs full color display by using white light emitting elements in combination with color filters, the light emitting device of the invention is not exclusively limited to this structure. In the case of using light emitting elements corresponding to each of RGB, full color display can be achieved by supplying the same power supply line potential to all pixels of the light emitting element. Specifically, light is transmitted to a smaller area of a shielding film corresponding to a light emitting element required to have a low luminance, and light is transmitted to a larger area of a shielding film corresponding to a light emitting element required to have a high luminance. Thus, luminance of the light emitting elements corresponding to each color can be adjusted. Similarly, when adopting the CCM method and supplying the same power supply line potential, white light can be balanced by controlling an area of a shielding film to which light is transmitted.

This application is based on Japanese Patent Application serial no. 2003-139457 filed in Japan Patent Office on 16, May, 2003, and Japanese Patent Application serial no. 2003-157599 filed in Japan Patent Office on 3rd, Jun., 2003, the contents of which are hereby incorporated by reference.

Although the present invention has been fully described by way of Embodiment Modes and Embodiments with reference to the accompanying drawings, it is to be understood that various changes and modifications will be apparent to those skilled in the art. Therefore, unless such changes and modifications depart from the scope of the present invention hereinafter defined, they should be construed as being included therein.

What is claimed is:

1. A light emitting device comprising in each pixel first to fourth transistors, a light emitting element, and a signal line, wherein the first transistor and the second transistor control a connection between the signal line and a gate of the third transistor; the fourth transistor controls a current value supplied to the light emitting element; the third transistor selects whether the current is supplied to the light emitting element or not; and the first transistor and the second transistor are switched separately.
2. A device according to claim 1, wherein the third transistor is operated in a linear region and the fourth transistor is operated in a saturation region.
3. A device according to claim 1, wherein light emitted from an electro luminescent layer interposed between an anode and a cathode of the light emitting element is transmitted to both the anode and the cathode.
4. An electronic apparatus using a light emitting device according to claim 1.
5. A light emitting device comprising a plurality of pixels each comprising first to fourth transistors, a light emitting element, a signal line, a first scan line, and a second scan line, wherein a gate of the first transistor is connected to the first scan line; a gate of the second transistor is connected to the second scan line; the first transistor and the second transistor control a connection between the signal line and a gate of the third transistor; the fourth transistor controls a current value supplied to the light emitting element;

25

the third transistor selects whether the current is supplied to the light emitting element or not; and among the plurality of pixels, pixels sharing the signal line have the second scan line in common, and pixels sharing the first scan line have different signal lines from each other.

6. A device according to claim 5, wherein the third transistor is operated in a linear region and the fourth transistor is operated in a saturation region.

7. A device according to claim 5, wherein light emitted from an electro luminescent layer interposed between an anode and a cathode of the light emitting element is transmitted to both the anode and the cathode.

8. An electronic apparatus using a light emitting device according to claim 5.

9. A light emitting device comprising in each pixel first to fourth transistors, a light emitting element, and a signal line, wherein the first transistor and the second transistor control a connection between the signal line and a gate of the third transistor; the fourth transistor controls a current value supplied to the light emitting element; the third transistor selects whether the current is supplied to the light emitting element or not; the first transistor and the second transistor are switched separately; the light emitting element, the third transistor, and the fourth transistor are connected in series between a first power supply and a second power supply; and a gate of the fourth transistor is connected to a third power supply.

10. A device according to claim 9, wherein the third transistor is operated in a linear region and the fourth transistor is operated in a saturation region.

11. A device according to claim 9, wherein light emitted from an electro luminescent layer interposed between an anode and a cathode of the light emitting element is transmitted to both the anode and the cathode.

12. An electronic apparatus using a light emitting device according to claim 9.

13. A light emitting device comprising a plurality of pixels each comprising first to fourth transistors, a light emitting element, a signal line, a first scan line, and a second scan line,

wherein a gate of the first transistor is connected to the first scan line;

a gate of the second transistor is connected to the second scan line;

the first transistor and the second transistor control a connection between the signal line and a gate of the third transistor;

the fourth transistor controls a current value supplied to the light emitting element;

the third transistor selects whether the current is supplied to the light emitting element or not;

among the plurality of pixels, pixels sharing the signal line have the second scan line in common, and pixels sharing the first scan line have different signal lines from each other;

the light emitting element, the third transistor, and the fourth transistor are connected in series between a first power supply and a second power supply; and

a gate of the fourth transistor is connected to a third power supply.

14. A device according to claim 13, wherein the third transistor is operated in a linear region and the fourth transistor is operated in a saturation region.

15. A device according to claim 13, wherein light emitted from an electro luminescent layer interposed between an

26

anode and a cathode of the light emitting element is transmitted to both the anode and the cathode.

16. An electronic apparatus using a light emitting device according to claim 13.

17. A light emitting device comprising in each pixel first to fourth transistors, a light emitting element, and a signal line,

wherein the first transistor and the second transistor control a connection between the signal line and a gate of the third transistor;

the fourth transistor controls a current value supplied to the light emitting element;

the third transistor selects whether the current is supplied to the light emitting element or not;

the first transistor and the second transistor are switched separately;

the light emitting element, the third transistor, and the fourth transistor are connected in series between a first power supply and a second power supply; and

a gate of the fourth transistor is connected to the second power supply.

18. A device according to claim 17, wherein the third transistor is operated in a linear region and the fourth transistor is operated in a saturation region.

19. A device according to claim 17, wherein light emitted from an electro luminescent layer interposed between an anode and a cathode of the light emitting element is transmitted to both the anode and the cathode.

20. An electronic apparatus using a light emitting device according to claim 17.

21. A light emitting device comprising a plurality of pixels each comprising first to fourth transistors, a light emitting element, a signal line, a first scan line, and a second scan line,

wherein a gate of the first transistor is connected to the first scan line;

a gate of the second transistor is connected to the second scan line;

the first transistor and the second transistor controls a connection between the signal line and a gate of the third transistor;

the fourth transistor controls a current value supplied to the light emitting element;

the third transistor selects whether the current is supplied to the light emitting element or not;

among the plurality of pixels, pixels sharing the signal line have the second scan line in common, and pixels sharing the first scan line have different signal lines from each other,

the light emitting element, the third transistor, and the fourth transistor are connected in series between a first power supply and a second power supply; and

a gate of the fourth transistor is connected to the second power supply.

22. A device according to claim 21, wherein the third transistor is operated in a linear region and the fourth transistor is operated in a saturation region.

23. A device according to claim 21, wherein light emitted from an electro luminescent layer interposed between an anode and a cathode of the light emitting element is transmitted to both the anode and the cathode.

24. An electronic apparatus using a light emitting device according to claim 21.

25. A light emitting device comprising in each pixel first to fourth transistors, a light emitting element, and a signal line,

wherein the first transistor and the second transistor control a connection between the signal line and a gate of the third transistor;

27

the fourth transistor controls a current value supplied to the light emitting element;
 the third transistor selects whether the current is supplied to the light emitting element or not;
 the first transistor and the second transistor are switched separately;
 the light emitting element, the third transistor, and the fourth transistor are connected in series between a first power supply and a second power supply; and
 the gate of the third transistor is connected to a gate of the fourth transistor.

26. A device according to claim 25, wherein the third transistor is operated in a linear region and the fourth transistor is operated in a saturation region.

27. A device according to claim 25, wherein light emitted from an electro luminescent layer interposed between an anode and a cathode of the light emitting element is transmitted to both the anode and the cathode.

28. An electronic apparatus using a light emitting device according to claim 25.

29. A light emitting device comprising a plurality of pixels each comprising first to fourth transistors, a light emitting element, a signal line, a first scan line, and a second scan line,

wherein a gate of the first transistor is connected to the first scan line;

a gate of the second transistor is connected to the second scan line;

the first transistor and the second transistor control a connection between the signal line and a gate of the third transistor;

the fourth transistor controls a current value supplied to the light emitting element;

the third transistor selects whether the current is supplied to the light emitting element or not;

among the plurality of pixels, pixels sharing the signal line have the second scan line in common, and pixels sharing the first scan line have different signal lines from each other;

the light emitting element, the third transistor, and the fourth transistor are connected in series between a first power supply and a second power supply; and

the gate of the third transistor is connected to a gate of the fourth transistor.

30. A device according to claim 29, wherein the third transistor is operated in a linear region and the fourth transistor is operated in a saturation region.

31. A device according to claim 29, wherein light emitted from an electro luminescent layer interposed between an anode and a cathode of the light emitting element is transmitted to both the anode and the cathode.

32. An electronic apparatus using a light emitting device according to claim 29.

33. A light emitting device comprising a plurality of pixels each comprising first to fifth transistors, a light emitting element, a signal line, and first to fourth scan lines,

wherein a gate of the first transistor is connected to the first scan line;

a gate of the second transistor is connected to the second scan line;

a gate of the fourth transistor is connected to the third scan line;

a gate of the fifth transistor is connected to the fourth scan line;

the first transistor and the second transistor controls a connection between the signal line and a gate of the third transistor;

the fourth transistor controls a current value supplied to the light emitting element;

28

the third transistor selects whether the current is supplied to the light emitting element or not;

among the plurality of pixels, pixels sharing the signal line have the second scan line and the fourth scan line in common, and pixels sharing the first scan line and the third scan line have different signal lines from each other; and

the light emitting element, the third transistor, the fourth transistor, and the fifth transistor are connected in series between a first power supply and a second power supply.

34. A device according to claim 33, wherein the third transistor is operated in a linear region and the fourth transistor is operated in a saturation region.

35. A device according to claim 33, wherein light emitted from an electro luminescent layer interposed between an anode and a cathode of the light emitting element is transmitted to both the anode and the cathode.

36. An electronic apparatus using a light emitting device according to claim 33.

37. An apparatus according to claim 12 wherein the electronic apparatus is selected from the group consisting of a mobile phone and a portable information terminal.

38. An apparatus according to claim 16 wherein the electronic apparatus is selected from the group consisting of a mobile phone and a portable information terminal.

39. A light emitting device comprising in each pixel first to fourth transistors, a light emitting element, a signal line, and a capacitor

wherein the first transistor and the second transistor control a connection between the signal line and a gate of the third transistor;

the fourth transistor controls a current value supplied to the light emitting element;

the third transistor selects whether the current is supplied to the light emitting element or not;

the first transistor and the second transistor are switched separately;

the light emitting element, the third transistor, and the fourth transistor are connected in series between a first power supply and a second power supply;

a gate of the fourth transistor is connected to a third power supply;

one of two electrodes of the capacitor is connected to the first power supply; and

the other of the two electrodes of the capacitor is connected to a gate of the third transistor.

40. A device according to claim 39, wherein the third transistor is operated in a linear region and the fourth transistor is operated in a saturation region.

41. A device according to claim 39, wherein light emitted from an electro luminescent layer interposed between an anode and a cathode of the light emitting element is transmitted to both the anode and the cathode.

42. An electronic apparatus using a light emitting device according to claim 39.

43. An apparatus according to claim 42 wherein the electronic apparatus is selected from the group consisting of a mobile phone and a portable information terminal.

44. A light emitting device comprising a plurality of pixels each comprising first to fourth transistors, a light emitting element, a signal line, a first scan line, a second scan line, and a capacitor,

wherein a gate of the first transistor is connected to the first scan line;

a gate of the second transistor is connected to the second scan line;

the first transistor and the second transistor control a connection between the signal line and a gate of the third transistor;

the fourth transistor controls a current value supplied to the light emitting element;
 the third transistor selects whether the current is supplied to the light emitting element or not;
 among the plurality of pixels, pixels sharing the signal line have the second scan line in common, and pixels sharing the first scan line have different signal lines from each other;
 the light emitting element, the third transistor, and the fourth transistor are connected in series between a first power supply and a second power supply;
 a gate of the fourth transistor is connected to a third power supply;
 one of two electrodes of the capacitor is connected to the first power supply;
 the other of the two electrodes of the capacitor is connected to a gate of the third transistor; and
 the first transistor and the second transistor are n-type transistors.

45. A device according to claim 44, wherein the third transistor is operated in a linear region and the fourth transistor is operated in a saturation region.

46. A device according to claim 44, wherein light emitted from an electro luminescent layer interposed between an anode and a cathode of the light emitting element is transmitted to both the anode and the cathode.

47. An electronic apparatus using a light emitting device according to claim 44.

48. An apparatus according to claim 47 wherein the electronic apparatus is selected from the group consisting of a mobile phone and a portable information terminal.

49. A light emitting device comprising in each pixel first to fourth transistors, a light emitting element, and a signal line,

wherein the first transistor and the second transistor control a connection between the signal line and a gate of the third transistor;

the fourth transistor controls a current value supplied to the light emitting element;

the third transistor selects whether the current is supplied to the light emitting element or not;

the first transistor and the second transistor are switched separately;

the light emitting element, the third transistor, and the fourth transistor are connected in series between a first power supply and a second power supply;

a gate of the fourth transistor is connected to a third power supply; and

the first transistor and the second transistor are p-type transistors.

50. A device according to claim 49, wherein the third transistor is operated in a linear region and the fourth transistor is operated in a saturation region.

51. A device according to claim 49, wherein light emitted from an electro luminescent layer interposed between an anode and a cathode of the light emitting element is transmitted to both the anode and the cathode.

52. An electronic apparatus using a light emitting device according to claim 49.

53. An apparatus according to claim 52 wherein the electronic apparatus is selected from the group consisting of a mobile phone and a portable information terminal.

54. A light emitting device comprising a plurality of pixels each comprising first to fourth transistors, a light emitting element, a signal line, a first scan line, and a second scan line,

wherein a gate of the first transistor is connected to the first scan line;

a gate of the second transistor is connected to the second scan line;

the first transistor and the second transistor control a connection between the signal line and a gate of the third transistor;

the fourth transistor controls a current value supplied to the light emitting element;

the third transistor selects whether the current is supplied to the light emitting element or not;

among the plurality of pixels, pixels sharing the signal line have the second scan line in common, and, pixels sharing the first scan line have different signal lines from each other;

the light emitting element, the third transistor, and the fourth transistor are connected in series between a first power supply and a second power supply;

a gate of the fourth transistor is connected to a third power supply; and

the first transistor and the second transistor are p-type transistors.

55. A device according to claim 54, wherein the third transistor is operated in a linear region and the fourth transistor is operated in a saturation region.

56. A device according to claim 54, wherein light emitted from an electro luminescent layer interposed between an anode and a cathode of the light emitting element is transmitted to both the anode and the cathode.

57. An electronic apparatus using a light emitting device according to claim 54.

58. An apparatus according to claim 57 wherein the electronic apparatus is selected from the group consisting of a mobile phone and a portable information terminal.

59. A light emitting device comprising in each pixel first to fourth transistors, a light emitting element, and a signal line,

wherein the first transistor and the second transistor control a connection between the signal line and a gate of the third transistor;

the fourth transistor controls a current value supplied to the light emitting element;

the third transistor selects whether the current is supplied to the light emitting element or not;

the first transistor and the second transistor are switched separately;

the light emitting element, the third transistor, and the fourth transistor are connected in series between a first power supply and a second power supply;

a gate of the fourth transistor is connected to a third power supply; and

the third transistor and the fourth transistor are p-type transistors.

60. A device according to claim 59, wherein the third transistor is operated in a linear region and the fourth transistor is operated in a saturation region.

61. A device according to claim 59, wherein light emitted from an electro luminescent layer interposed between an anode and a cathode of the light emitting element is transmitted to both the anode and the cathode.

62. An electronic apparatus using a light emitting device according to claim 59.

63. An apparatus according to claim 62 wherein the electronic apparatus is selected from the group consisting of a mobile phone and a portable information terminal.

专利名称(译)	电致发光显示器具有4个TFT，用于在垂直和水平图像状态之间旋转。		
公开(公告)号	US7218294	公开(公告)日	2007-05-15
申请号	US10/844401	申请日	2004-05-13
[标]申请(专利权)人(译)	株式会社半导体能源研究所		
申请(专利权)人(译)	半导体能源研究所有限公司.		
当前申请(专利权)人(译)	半导体能源研究所有限公司.		
[标]发明人	KOYAMA JUN OSAME MITSUAKI YAMAZAKI YU ANZAI AYA		
发明人	KOYAMA, JUN OSAME, MITSUAKI YAMAZAKI, YU ANZAI, AYA		
IPC分类号	G09G3/30 H01L51/50 G02F1/1343 G09F9/30 G09G3/20 G09G3/32 H01L27/32 H05B33/14		
CPC分类号	G09G3/3233 G09G3/3266 G09G3/3291 G09G2300/0426 G09G2300/0814 G09G2340/0492 G09G2300/0861 G09G2300/0866 G09G2310/0251 G09G2320/0223 G09G2320/0233 G09G2300/0842		
优先权	2003139457 2003-05-16 JP 2003157599 2003-06-03 JP		
其他公开文献	US20040263741A1		
外部链接	Espacenet USPTO		

摘要(译)

本发明提供一种发光装置，其能够抑制由于电致发光材料的劣化导致的发光元件的亮度下降或亮度不均匀，并且能够在没有帧存储器的情况下将图像方向垂直地水平切换到水平方向。本发明的发光器件在每个像素中包括第一至第四晶体管，发光元件和信号线。第一晶体管和第二晶体管控制信号线与第三晶体管的栅极之间的连接，第四晶体管控制提供给发光元件的电流值，第三晶体管选择是否将电流提供给发光元件要素与否。此外，第一晶体管和第二晶体管分开切换。

